

Battery	1 "D-Cell" Lithium, or alkaline
Battery Life*	Lithium: 2 years, Alkaline: 8 months
Operating Temperature	-31 to 185 °F
Radio Frequency Band	900 MHz standard - European Community's 868 MHz as an option
Radio Power	15 dBm
Material	Stainless Steel
Weight	5 lb

All dimensions are expressed in inches
The information in this document is subject to change without notice

*Battery life estimated for standard product only, using factory specified batteries correctly installed, operating for 32 hours per week. Individual results may vary with intensity of use, environmental conditions and other factors.

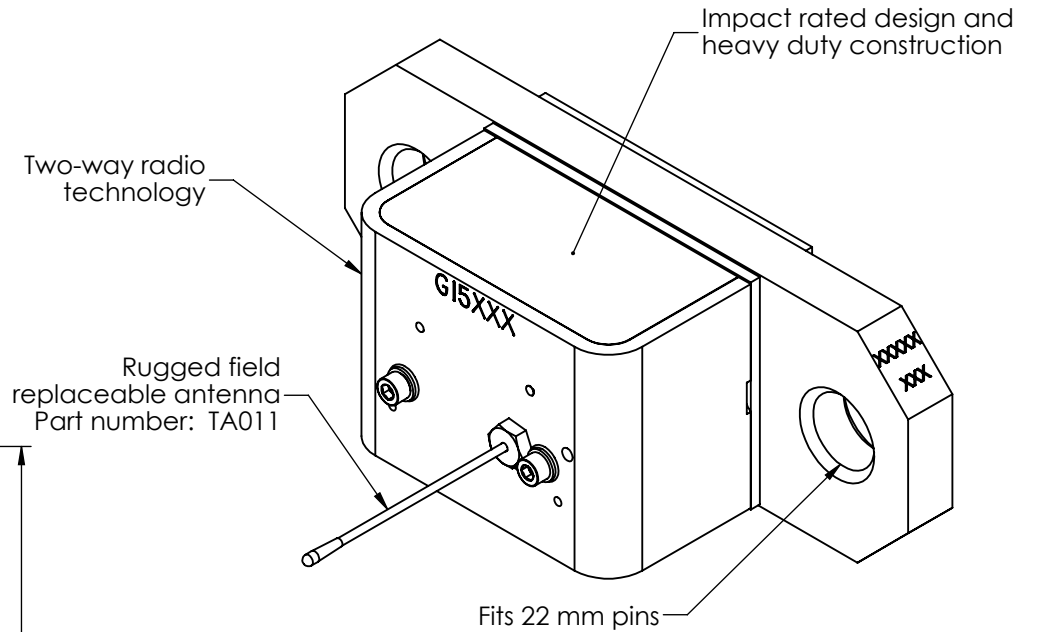
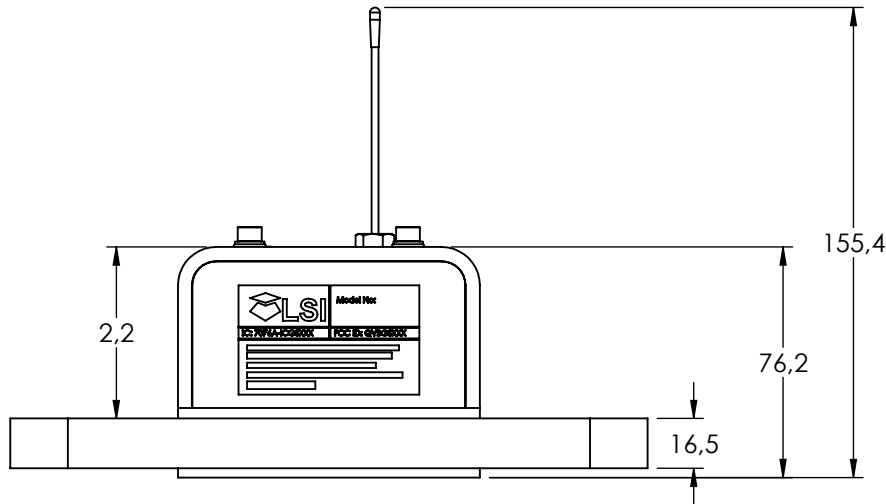
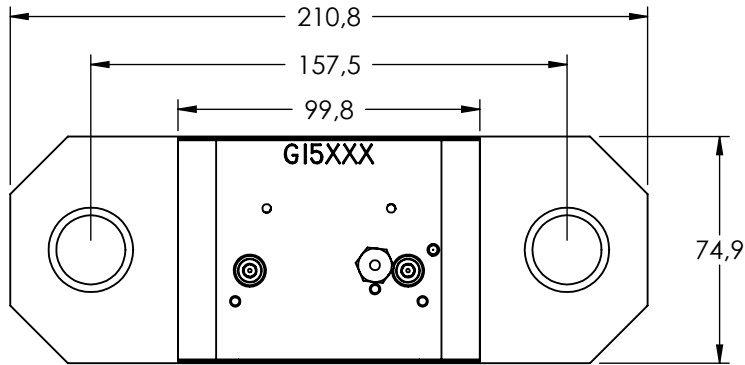
PROPRIETARY AND CONFIDENTIAL

THE INFORMATION CONTAINED IN THIS DRAWING IS THE SOLE PROPERTY OF LOAD SYSTEMS INTERNATIONAL. ANY REPRODUCTION IN PART OR AS A WHOLE WITHOUT THE WRITTEN PERMISSION OF LOAD SYSTEMS INTERNATIONAL IS PROHIBITED.



PART NO: GC005 | DWG NO: DS-GC005 | REV: 4

DESCRIPTION: **Wireless Load Cell
5,000 lb Working Load Limit**



Battery	1 "D-Cell" Lithium, or alkaline
Battery Life*	Lithium: 2 years, Alkaline: 8 months
Operating Temperature	-35 to +85°C
Radio Frequency Band	900 MHz standard - European Community's 868 MHz as an option
Radio Power	15 dBm
Material	Stainless Steel
Weight	2.3 kg

All dimensions are expressed in mm
The information in this document is subject to change without notice

*Battery life estimated for standard product only, using factory specified batteries correctly installed, operating for 32 hours per week. Individual results may vary with intensity of use, environmental conditions and other factors.

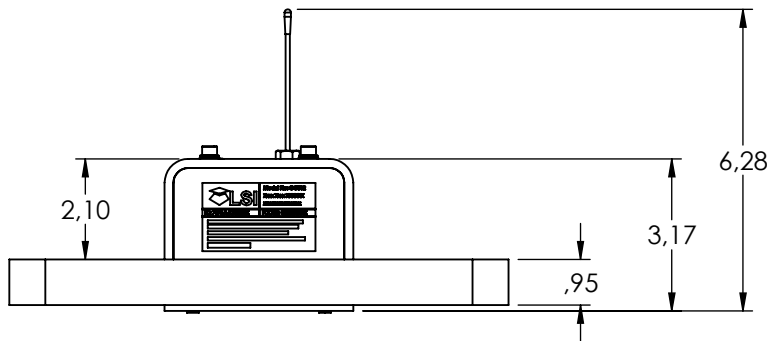
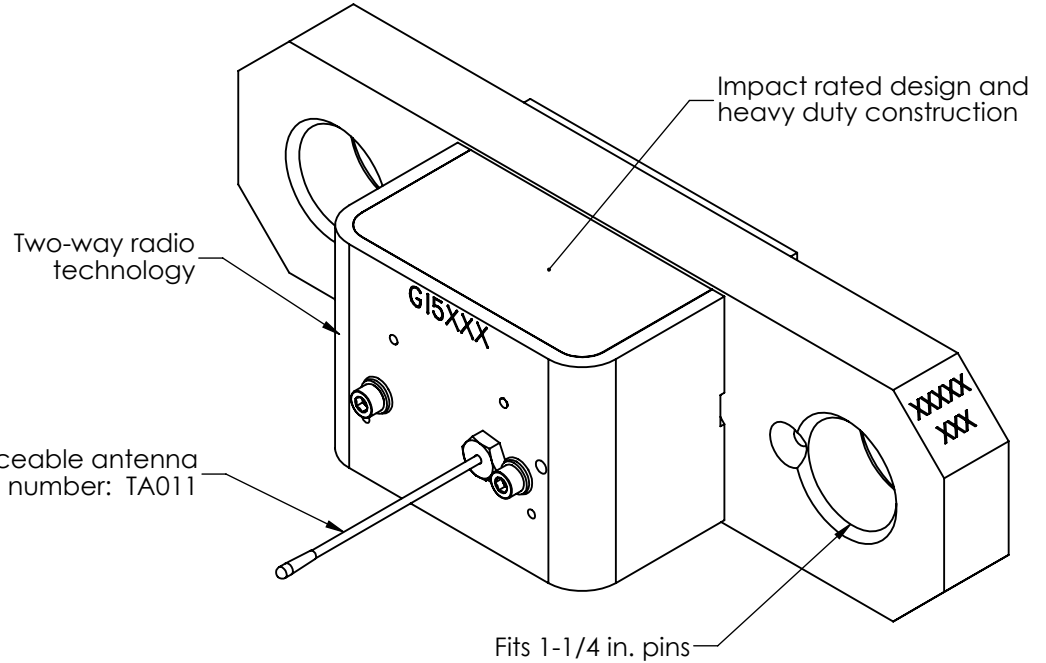
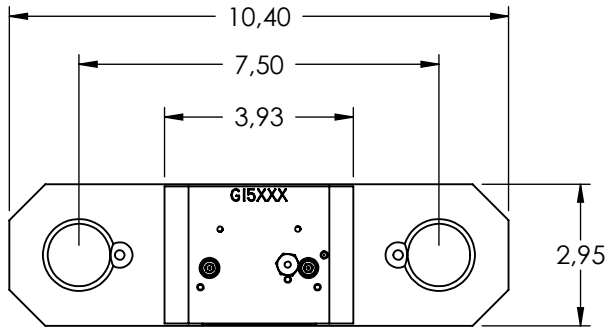
PROPRIETARY AND CONFIDENTIAL

THE INFORMATION CONTAINED IN THIS DRAWING IS THE SOLE PROPERTY OF LOAD SYSTEMS INTERNATIONAL. ANY REPRODUCTION IN PART OR AS A WHOLE WITHOUT THE WRITTEN PERMISSION OF LOAD SYSTEMS INTERNATIONAL IS PROHIBITED.

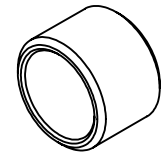


PART NO: GC005 | DWG NO: DS-GC005 | REV: 4

DESCRIPTION: **Wireless Load Cell
2270 kg Working Load Limit**



Bushing
Part number: PC401
Adapts to 1 in. pin
One included as standard



Battery	1 "D-Cell" Lithium, or alkaline
Battery Life	Lithium: 2 years, Alkaline: 8 months
Operating Temperature	-31 to 185 °F
Radio Frequency Band	900 MHz standard - European Community's 868 MHz as an option
Radio Power	15 dBm
Material	Stainless Steel
Weight	9 lb

All dimensions are expressed in inches
The information in this document is subject to change without notice

*Battery life estimated for standard product only, using factory specified batteries correctly installed, operating for 32 hours per week. Individual results may vary with intensity of use, environmental conditions and other factors.

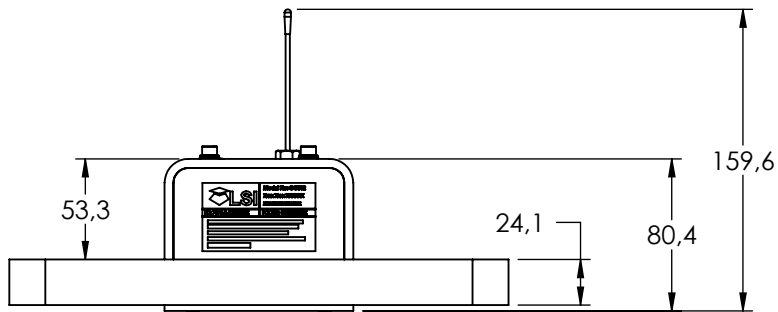
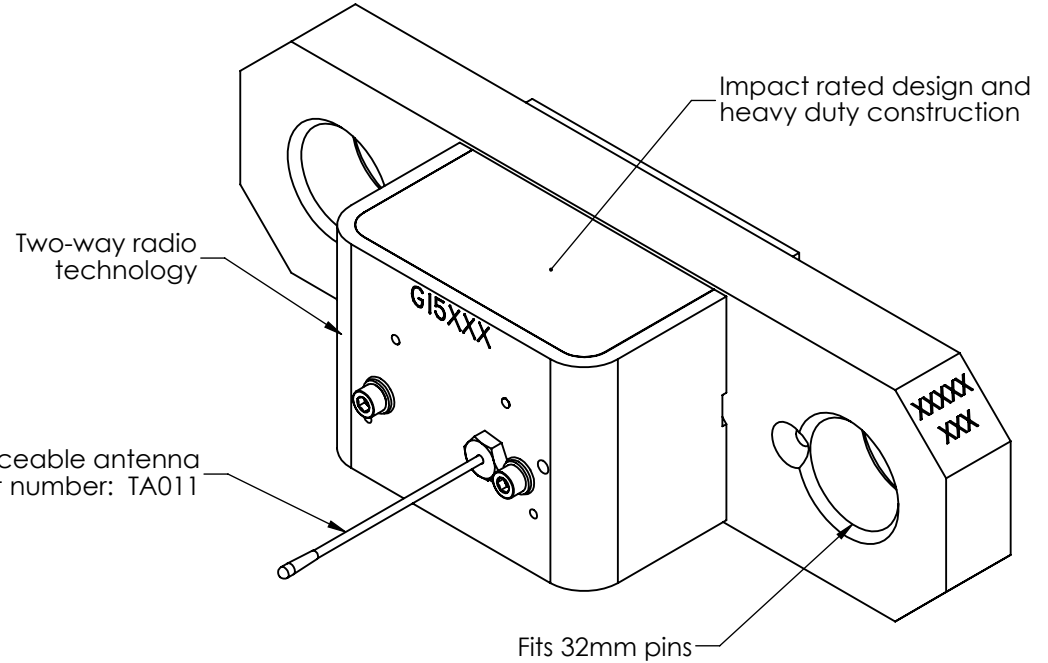
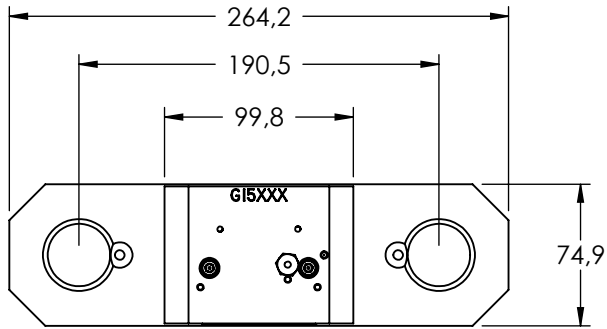
PROPRIETARY AND CONFIDENTIAL

THE INFORMATION CONTAINED IN THIS DRAWING IS THE SOLE PROPERTY OF LOAD SYSTEMS INTERNATIONAL. ANY REPRODUCTION IN PART OR AS A WHOLE WITHOUT THE WRITTEN PERMISSION OF LOAD SYSTEMS INTERNATIONAL IS PROHIBITED.

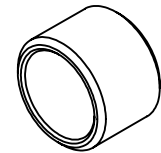


PART NO: GC012 DWG NO: DS-GC012 REV: 4

DESCRIPTION: **Wireless Load Cell**
12,000 lb Working Load Limit



Bushing
Part number: PC401
Adapts to 25mm pin
One included as standard



Battery	1 "D-Cell" Lithium, or alkaline
Battery Life	Lithium: 2 years, Alkaline: 8 months
Operating Temperature	-35 to +85°C
Radio Frequency Band	900 MHz standard - European Community's 868 MHz as an option
Radio Power	15 dBm
Material	Stainless Steel
Weight	4 kg

All dimensions are expressed in mm
The information in this document is subject to change without notice

*Battery life estimated for standard product only, using factory specified batteries correctly installed, operating for 32 hours per week. Individual results may vary with intensity of use, environmental conditions and other factors.

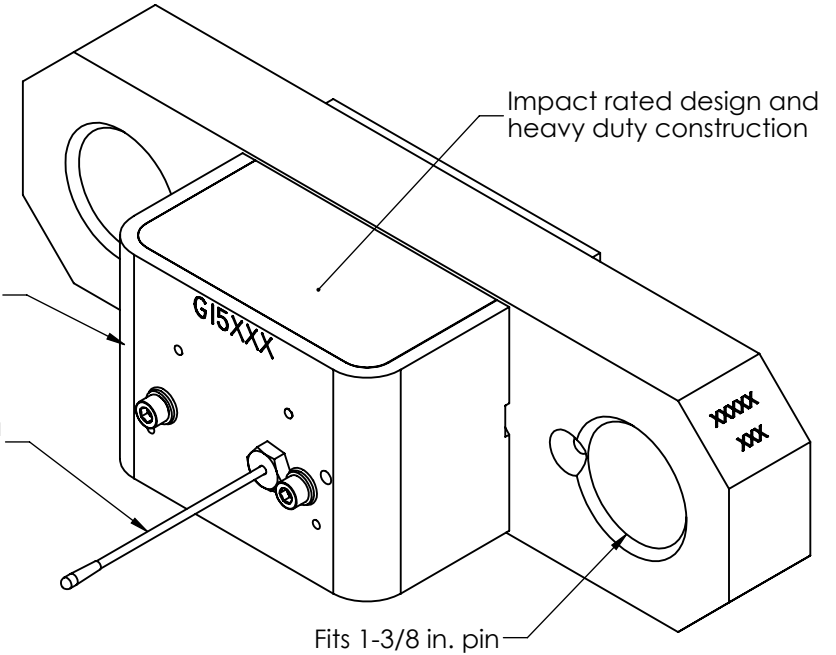
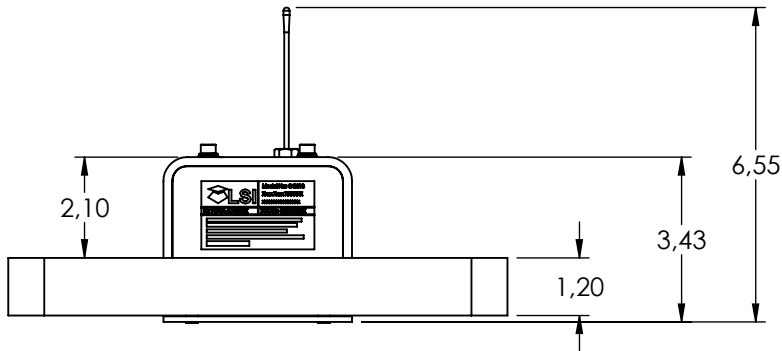
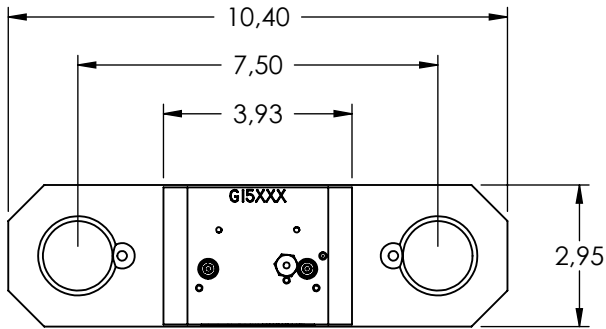
PROPRIETARY AND CONFIDENTIAL

THE INFORMATION CONTAINED IN THIS DRAWING IS THE SOLE PROPERTY OF LOAD SYSTEMS INTERNATIONAL. ANY REPRODUCTION IN PART OR AS A WHOLE WITHOUT THE WRITTEN PERMISSION OF LOAD SYSTEMS INTERNATIONAL IS PROHIBITED.

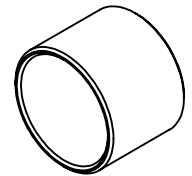


PART NO: GC012 | DWG NO: DS-GC012 | REV: 4

DESCRIPTION: **Wireless Load Cell
5440 kg Working Load Limit**



Bushing
Part number: PC118
Adapts to 1-1/4 in. pin
One included as standard



Battery	1 "D-Cell" Lithium, or alkaline
Estimated Battery Life*	Lithium: 2 years, Alkaline: 8 months
Operating Temperature	-31 to 185 °F
Radio Frequency Band	900 MHz standard - European Community's 868 MHz as an option
Radio Power	15 dBm
Material	Stainless Steel
Weight	10 lb

All dimensions are expressed in inches
The information in this document is subject to change without notice

*Battery life estimated for standard product only, using factory specified batteries correctly installed, operating for 32 hours per week. Individual results may vary with intensity of use, environmental conditions and other factors.

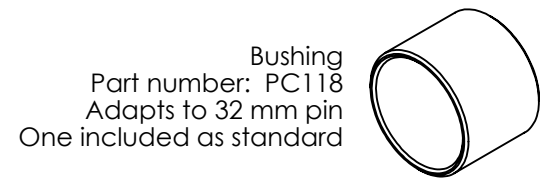
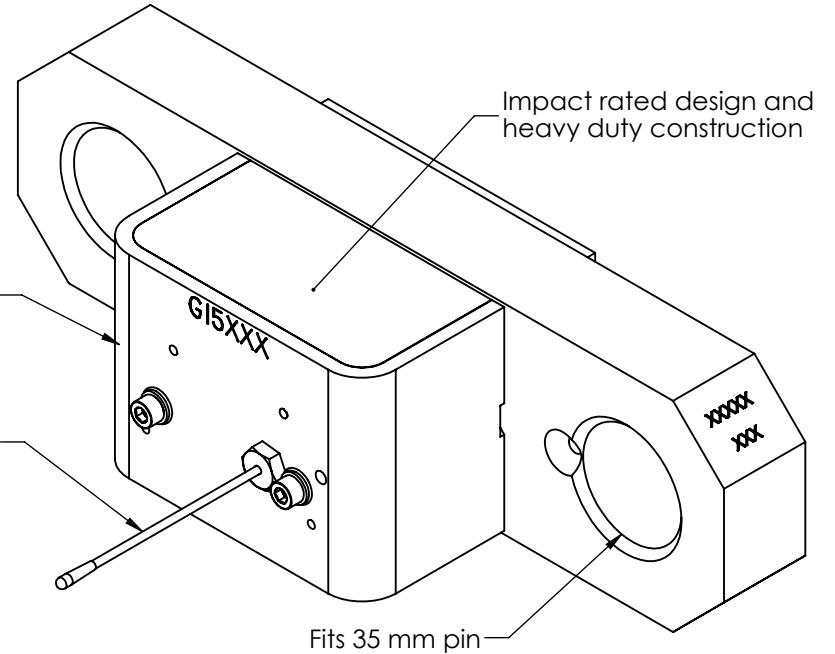
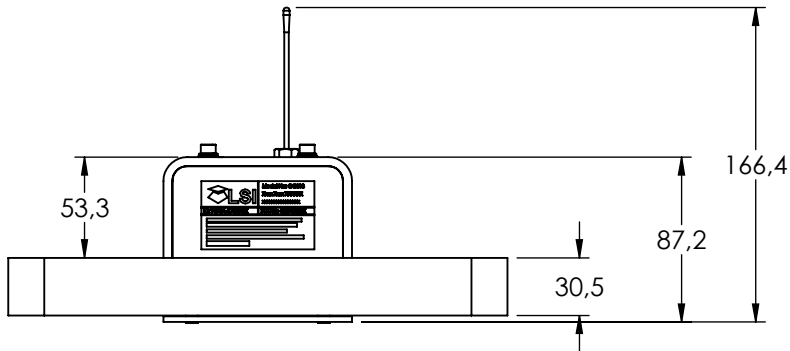
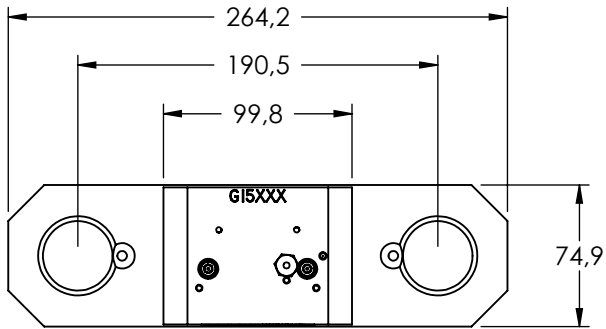
PROPRIETARY AND CONFIDENTIAL

THE INFORMATION CONTAINED IN THIS DRAWING IS THE SOLE PROPERTY OF LOAD SYSTEMS INTERNATIONAL. ANY REPRODUCTION IN PART OR AS A WHOLE WITHOUT THE WRITTEN PERMISSION OF LOAD SYSTEMS INTERNATIONAL IS PROHIBITED.



PART NO: GC018 DWG NO: DS-GC018 REV: 4

DESCRIPTION: **Wireless Load Cell**
18,000 lb Working Load Limit



Battery	1 "D-Cell" Lithium, or alkaline
Estimated Battery Life*	Lithium: 2 years, Alkaline: 8 months
Operating Temperature	-35 to +85°C
Radio Frequency Band	900 MHz standard - European Community's 868 MHz as an option
Radio Power	15 dBm
Material	Stainless Steel
Weight	4.5 kg

All dimensions are expressed in mm
The information in this document is subject to change without notice

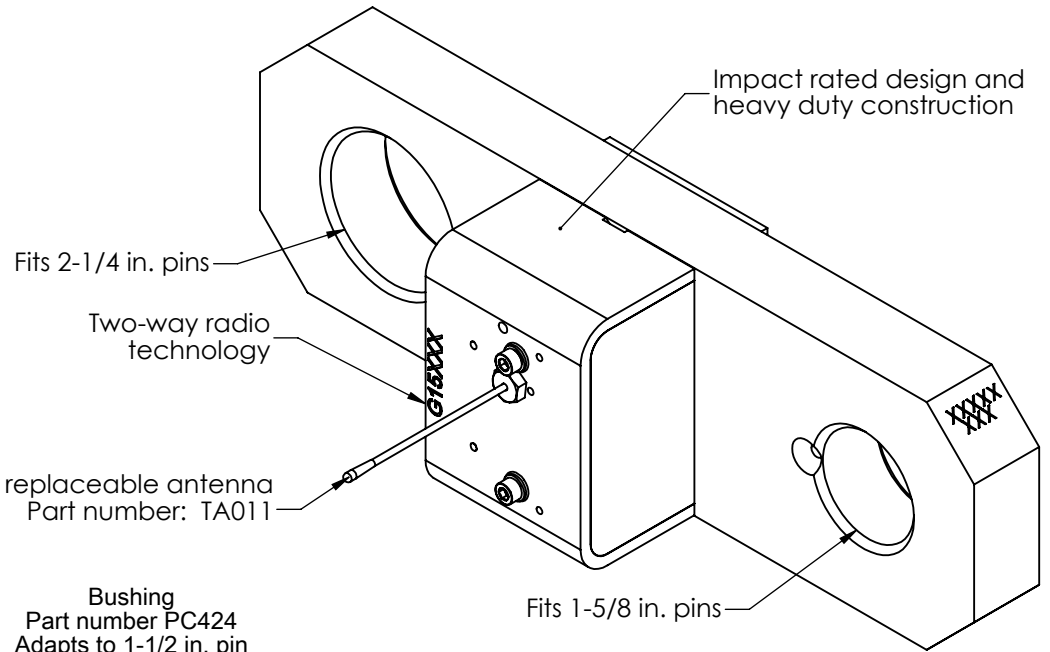
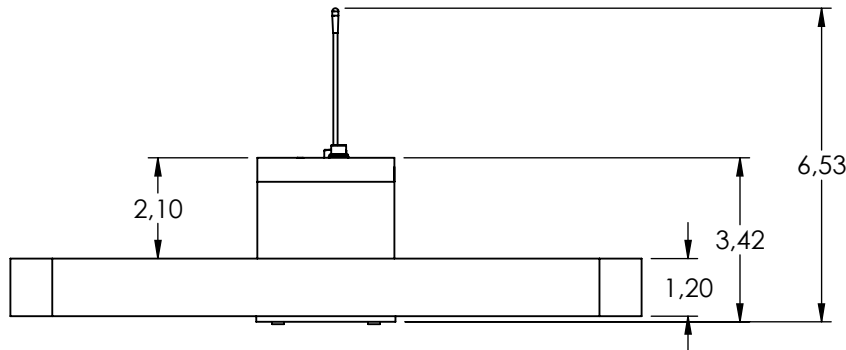
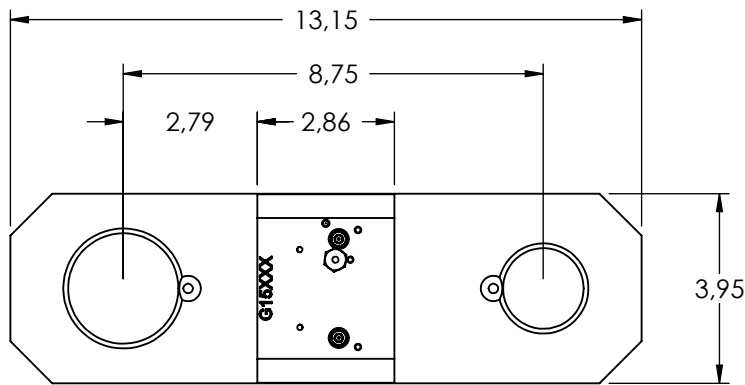
*Battery life estimated for standard product only, using factory specified batteries correctly installed, operating for 32 hours per week. Individual results may vary with intensity of use, environmental conditions and other factors.

PROPRIETARY AND CONFIDENTIAL
THE INFORMATION CONTAINED IN THIS DRAWING IS THE SOLE PROPERTY OF LOAD SYSTEMS INTERNATIONAL. ANY REPRODUCTION IN PART OR AS A WHOLE WITHOUT THE WRITTEN PERMISSION OF LOAD SYSTEMS INTERNATIONAL IS PROHIBITED.

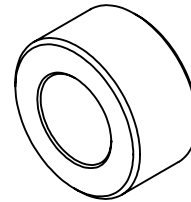


PART NO: GC018 DWG NO: DS-GC018 REV: 4

DESCRIPTION: **Wireless Load Cell**
8160 kg Working Load Limit

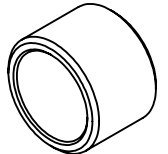


Bushing
Part number PC424
Adapts to 1-1/2 in. pin
One included as standard
on the 2-1/4 in. hole *



Other available
adapter bushings
for the 2-1/4 in. hole:
PC422 fits 1in. pin
PC425 fits 1-5/8 in. pin
PC426 fits 1-3/4 in. pin
PC427 fits 1-7/8 in. pin
PC428 fits 2 in. pin

Available
adapter bushings
for the 1-5/8 in. hole:
PC429 fits 1-1/4 in. pin



Battery	1 "D-Cell" Lithium, or alkaline
Estimated Battery Life**	Lithium: 2 years, Alkaline: 8 months
Operating Temperature	-31 to 185 °F
Radio Frequency Band	900 MHz standard - European Community's 868 MHz as an option
Radio Power	15 dBm
Material	Stainless Steel
Weight	16 lb
Bushings*	Exact bushings included depends on adapter plate kit when load cell and adapter plate kit are ordered together.

All dimensions expressed are in inches
The information in this document is subject to change without notice

**Battery life estimated for standard product only, using factory specified batteries correctly installed, operating for 32 hours per week. Individual results may vary with intensity of use, environmental conditions and other factors.

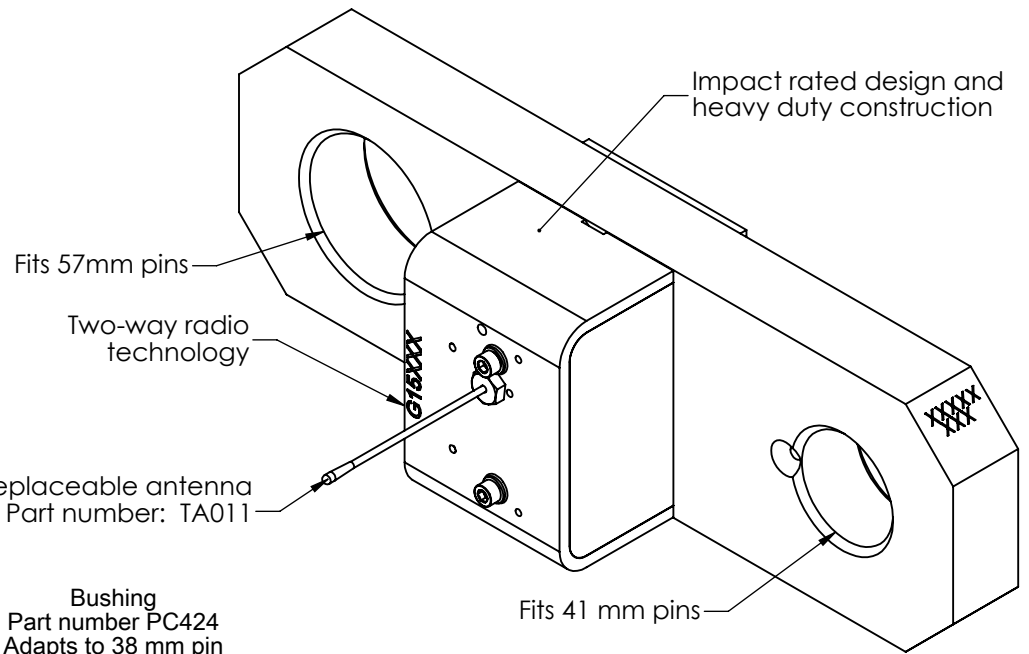
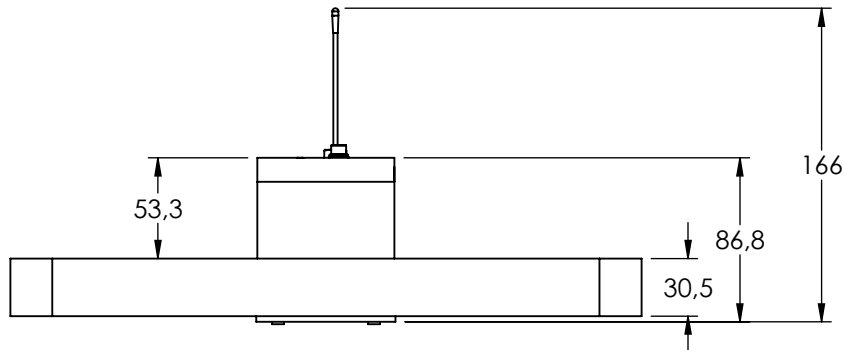
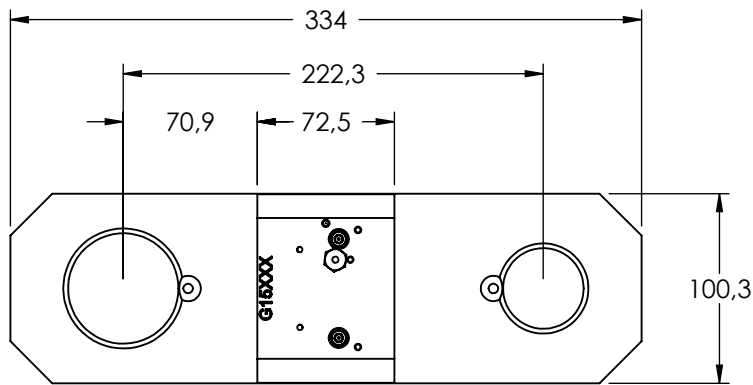
PROPRIETARY AND CONFIDENTIAL

THE INFORMATION CONTAINED IN THIS DRAWING IS THE SOLE PROPERTY OF LOAD SYSTEMS INTERNATIONAL. ANY REPRODUCTION IN PART OR AS A WHOLE WITHOUT THE WRITTEN PERMISSION OF LOAD SYSTEMS INTERNATIONAL IS PROHIBITED.

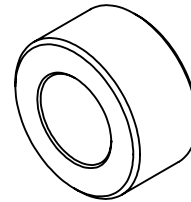


PART NO: **GC035** DWG NO: **DS-GC035** REV: **6**

DESCRIPTION: **Wireless Load Cell**
35,000 lb Working Load Limit

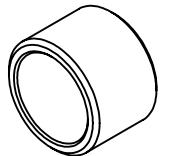


Bushing
Part number PC424
Adapts to 38 mm pin
One included as standard
on the 57 mm hole *



Other available
adapter bushings:
PC422 fits 25 mm pin
PC425 fits 41 mm pin
PC426 fits 44 mm pin
PC427 fits 48 mm pin
PC428 fits 50 mm pin

Available
adapter bushings
for the 41 mm hole:
PC429 fits 32 mm pin



Battery	1 "D-Cell" Lithium, or alkaline
Estimated Battery Life**	Lithium: 2 years, Alkaline: 8 months
Operating Temperature	-35 to +85°C
Radio Frequency Band	900 MHz standard - European Community's 868 MHz as an option
Radio Power	15 dBm
Material	Stainless Steel
Weight	7.3 kg
Bushings*	Exact bushings included depends on adapter plate kit when load cell and adapter plate kit are ordered together.

All dimensions expressed are in mm
The information in this document is subject to change without notice

**Battery life estimated for standard product only, using factory specified batteries correctly installed, operating for 32 hours per week. Individual results may vary with intensity of use, environmental conditions and other factors.

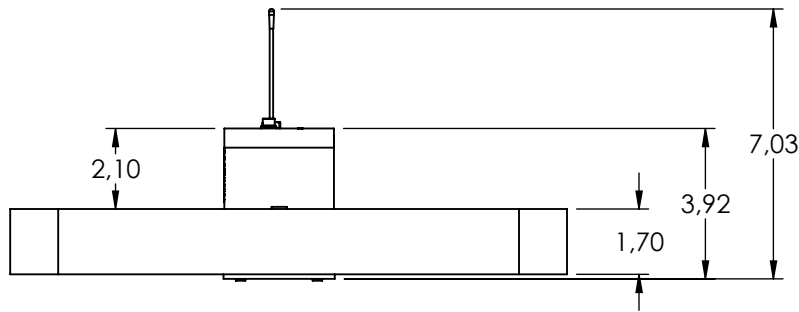
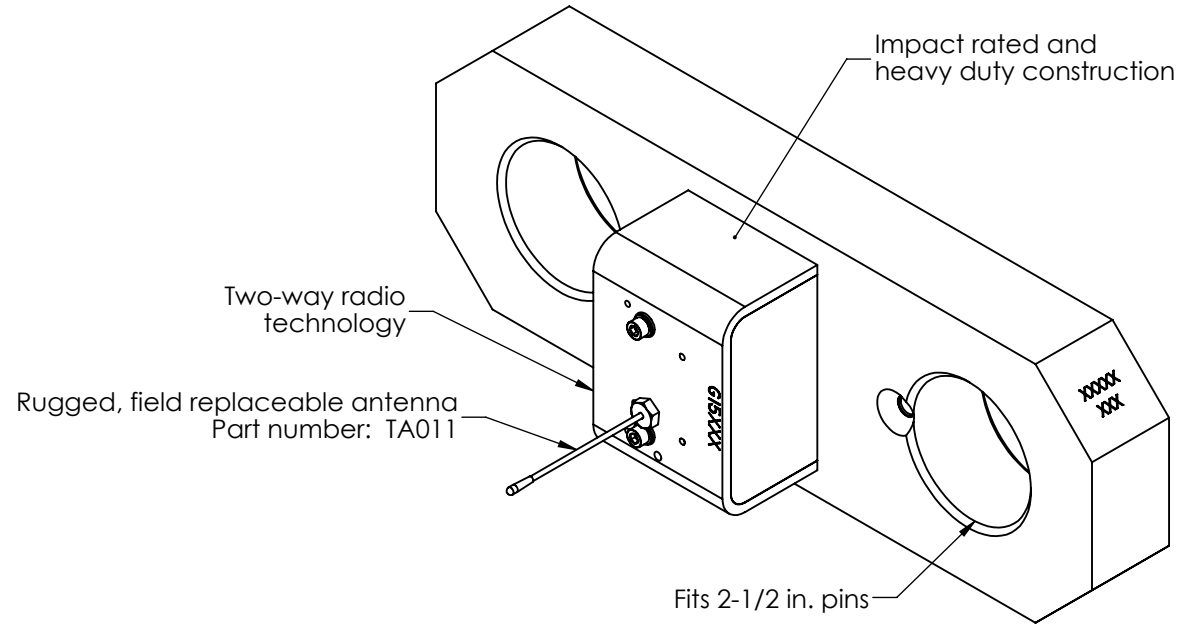
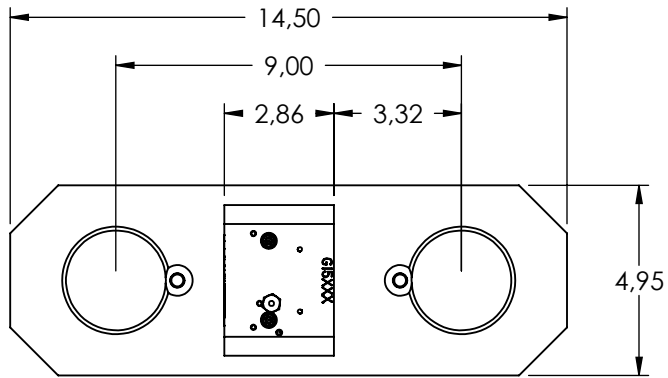
PROPRIETARY AND CONFIDENTIAL

THE INFORMATION CONTAINED IN THIS DRAWING IS THE SOLE PROPERTY OF LOAD SYSTEMS INTERNATIONAL. ANY REPRODUCTION IN PART OR AS A WHOLE WITHOUT THE WRITTEN PERMISSION OF LOAD SYSTEMS INTERNATIONAL IS PROHIBITED.

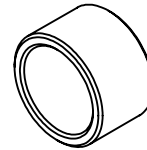


PART NO: GC035 DWG NO: DS-GC035 REV: 6

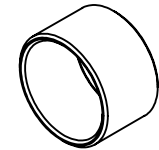
DESCRIPTION: Wireless Load Cell
15880 kg Working Load Limit



Bushing
Part number: PC115
Adapts to 2 in. pin
One included as standard*



Bushing
Part number: PC114
Adapts to 2-1/4 in. pin
One included as standard*



Battery	1 "D-Cell" Lithium, or alkaline
Estimated Battery Life**	Lithium: 2 years, Alkaline: 8 months
Operating Temperature	-31 to 185 °F
Radio Frequency Band	900 MHz standard - European Community's 868 MHz as an option
Radio Power	15 dBm
Material	Stainless Steel
Weight	29 lb
Bushings*	Exact bushings included depends on adapter plate kit when load cell and adapter plate kit are ordered together

All dimensions are expressed in inches
The information in this document is subject to change without notice

**Battery life estimated for standard product only, using factory specified batteries correctly installed, operating for 32 hours per week. Individual results may vary with intensity of use, environmental conditions and other factors.

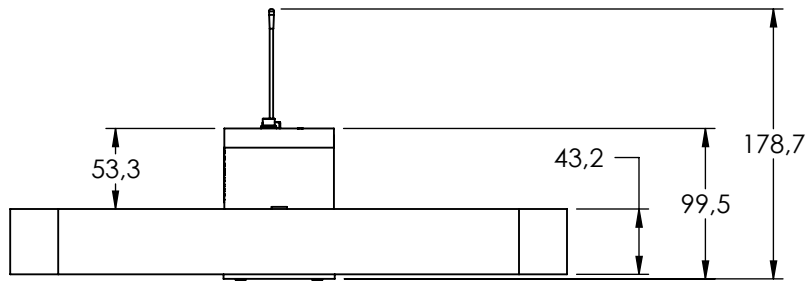
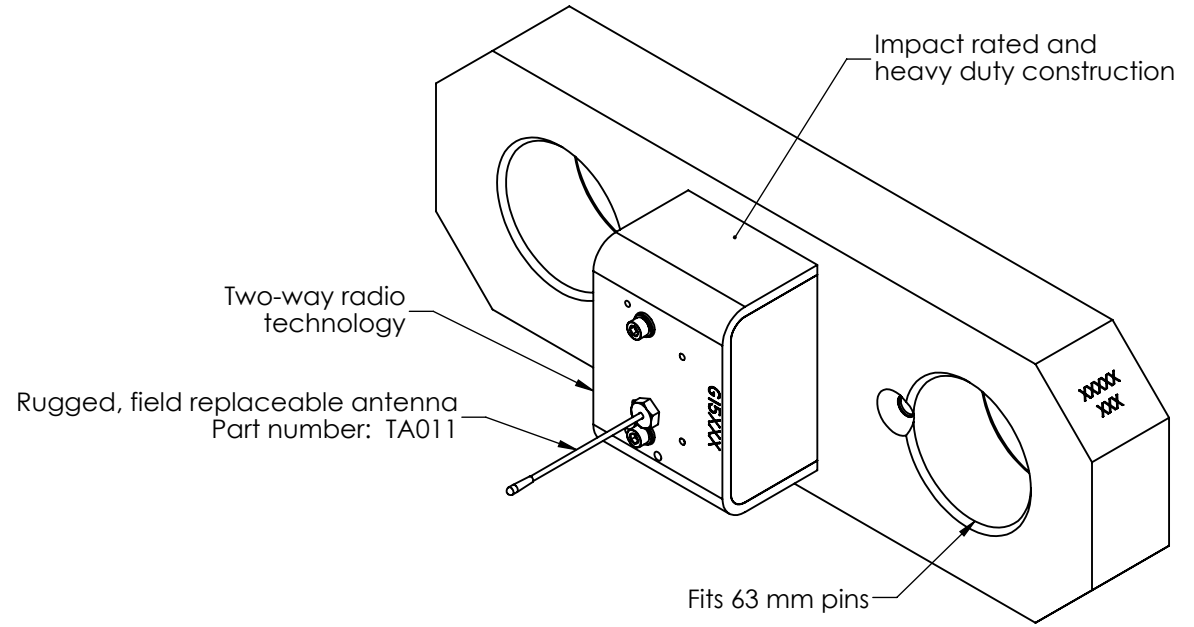
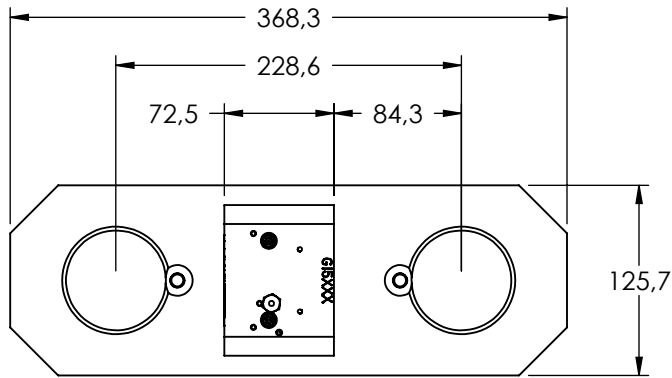
PROPRIETARY AND CONFIDENTIAL

THE INFORMATION CONTAINED IN THIS DRAWING IS THE SOLE PROPERTY OF LOAD SYSTEMS INTERNATIONAL. ANY REPRODUCTION IN PART OR AS A WHOLE WITHOUT THE WRITTEN PERMISSION OF LOAD SYSTEMS INTERNATIONAL IS PROHIBITED.

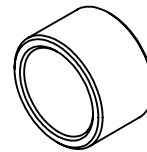


PART NO: GC060 DWG NO: DS-GC060 REV: 4

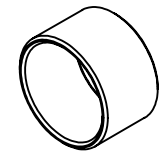
DESCRIPTION: **Wireless Load Cell**
60,000 lb Working Load Limit



Bushing
Part number: PC115
Adapts to 51 mm pin
One included as standard*



Bushing
Part number: PC114
Adapts to 57 mm pin
One included as standard*



Battery	1 "D-Cell" Lithium, or alkaline
Estimated Battery Life**	Lithium: 2 years, Alkaline: 8 months
Operating Temperature	-35 to +85°C
Radio Frequency Band	900 MHz standard - European Community's 868 MHz as an option
Radio Power	15 dBm
Material	Stainless Steel
Weight	13.2 kg
Bushings*	Exact bushings included depends on adapter plate kit when load cell and adapter plate kit are ordered together

All dimensions are expressed in mm
The information in this document is subject to change without notice

**Battery life estimated for standard product only, using factory specified batteries correctly installed, operating for 32 hours per week. Individual results may vary with intensity of use, environmental conditions and other factors.

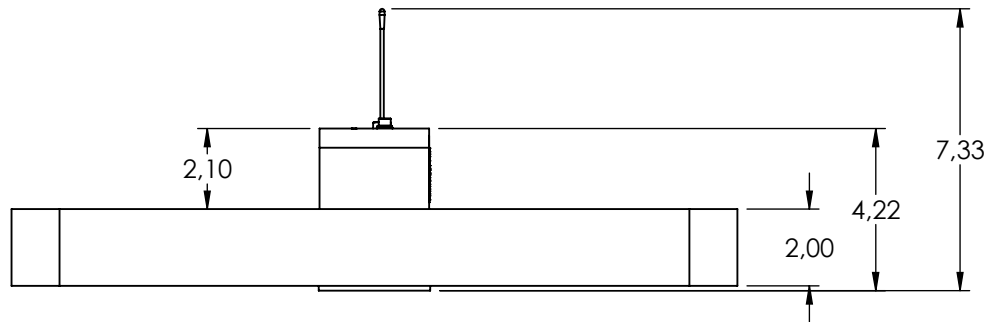
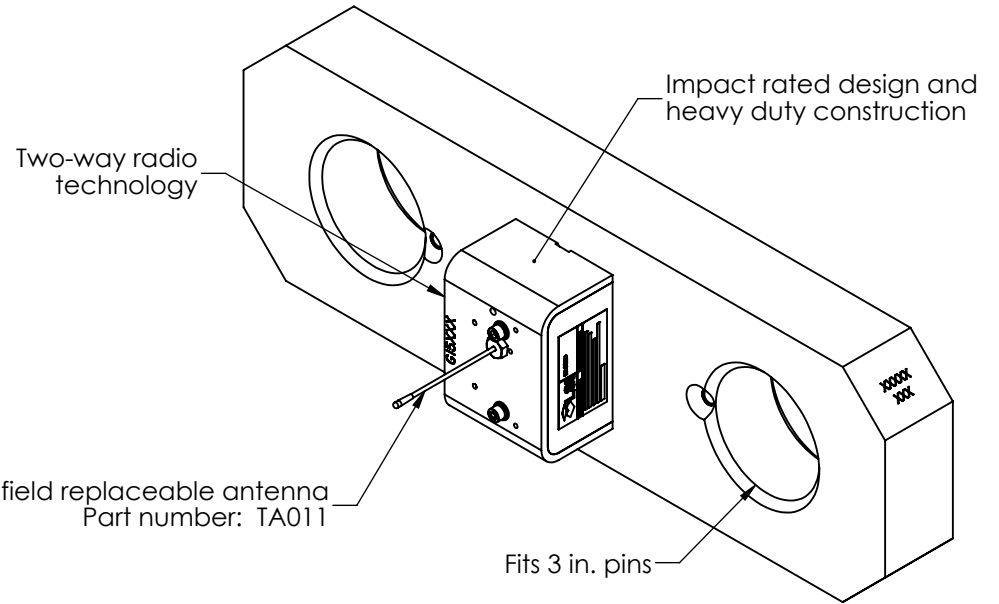
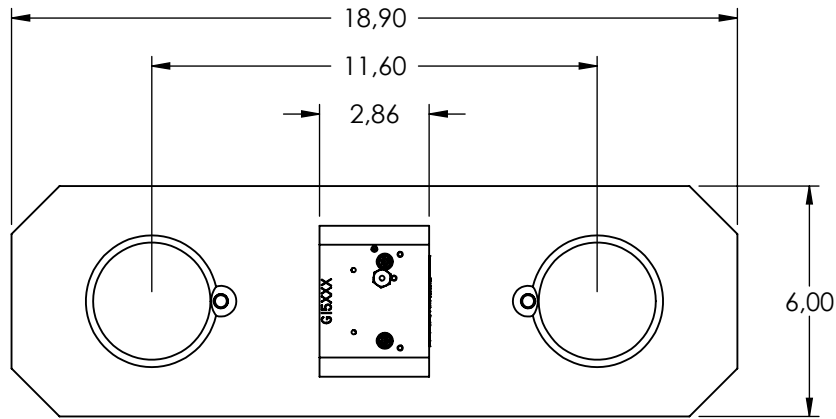
PROPRIETARY AND CONFIDENTIAL

THE INFORMATION CONTAINED IN THIS DRAWING IS THE SOLE PROPERTY OF LOAD SYSTEMS INTERNATIONAL. ANY REPRODUCTION IN PART OR AS A WHOLE WITHOUT THE WRITTEN PERMISSION OF LOAD SYSTEMS INTERNATIONAL IS PROHIBITED.



PART NO: GC060 DWG NO: DS-GC060 REV: 4

DESCRIPTION: **Wireless Load Cell**
27215 kg Working Load Limit



Battery	1 "D-Cell" Lithium, or alkaline
Estimated Battery Life*	Lithium: 2 years, Alkaline: 8 months
Operating Temperature	-31 to 185 °F
Radio Frequency Band	900 MHz standard - European Community's 868 MHz as an option
Radio Power	15 dBm
Material	Stainless Steel
Weight	46 lb

All dimensions are expressed in inches
The information in this document is subject to change without notice

*Battery life estimated for standard product only, using factory specified batteries correctly installed, operating for 32 hours per week. Individual results may vary with intensity of use, environmental conditions and other factors.

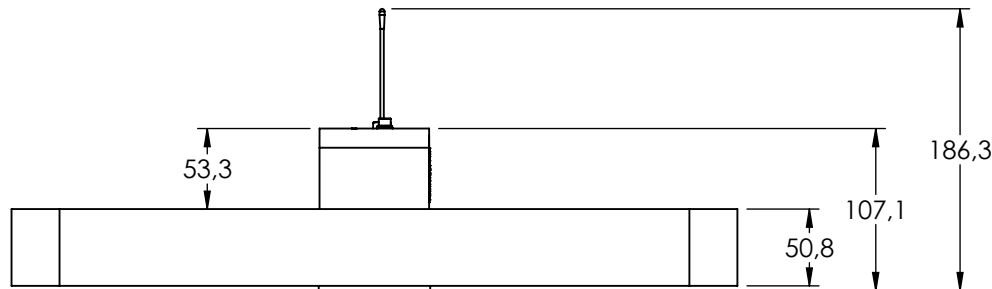
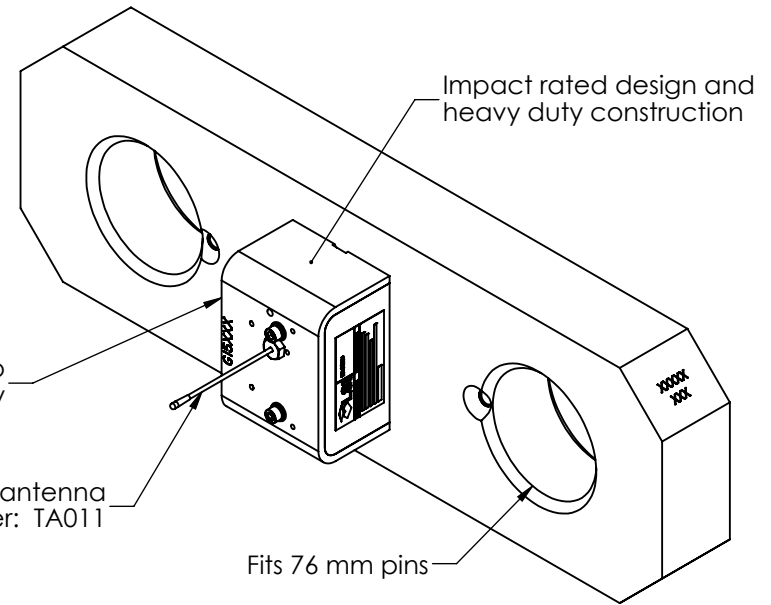
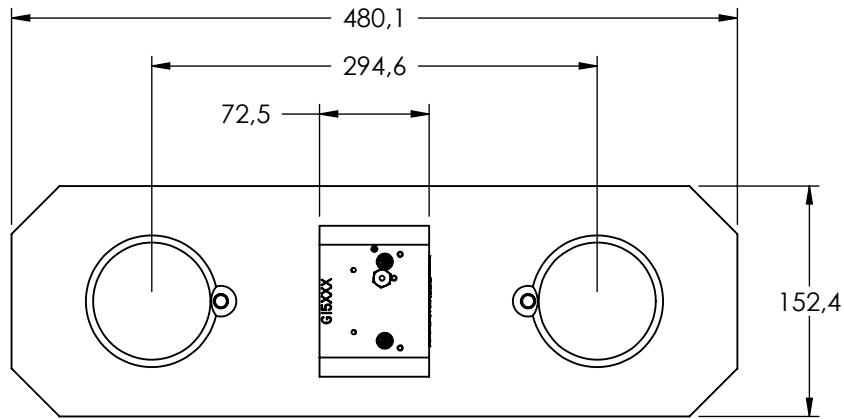
PROPRIETARY AND CONFIDENTIAL

THE INFORMATION CONTAINED IN THIS DRAWING IS THE SOLE PROPERTY OF LOAD SYSTEMS INTERNATIONAL. ANY REPRODUCTION IN PART OR AS A WHOLE WITHOUT THE WRITTEN PERMISSION OF LOAD SYSTEMS INTERNATIONAL IS PROHIBITED.



PART NO: GC100 DWG NO: DS-GC100 REV: 4

DESCRIPTION: **Wireless Load Cell**
100,000 lb Working Load Limit



Battery	1 "D-Cell" Lithium, or alkaline
Estimated Battery Life*	Lithium: 2 years, Alkaline: 8 months
Operating Temperature	-35 to +85°C
Radio Frequency Band	900 MHz standard - European Community's 868 MHz as an option
Radio Power	15 dBm
Material	Stainless Steel
Weight	21kg

All dimensions are expressed in mm
The information in this document is subject to change without notice

*Battery life estimated for standard product only, using factory specified batteries correctly installed, operating for 32 hours per week. Individual results may vary with intensity of use, environmental conditions and other factors.

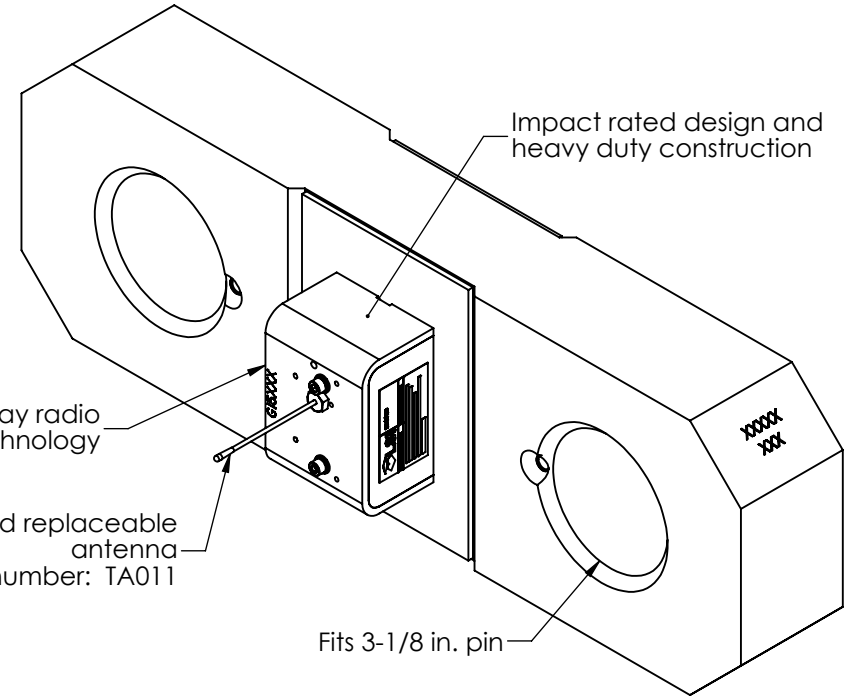
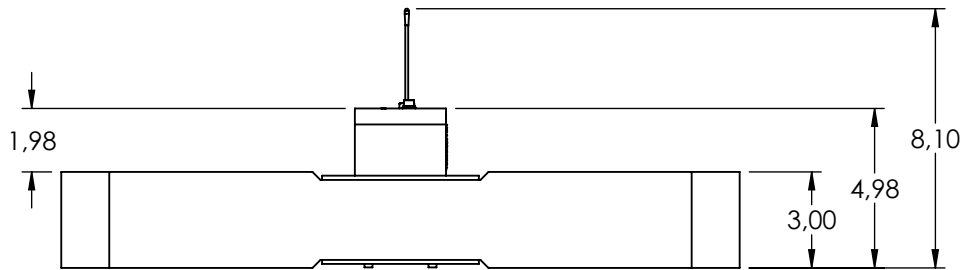
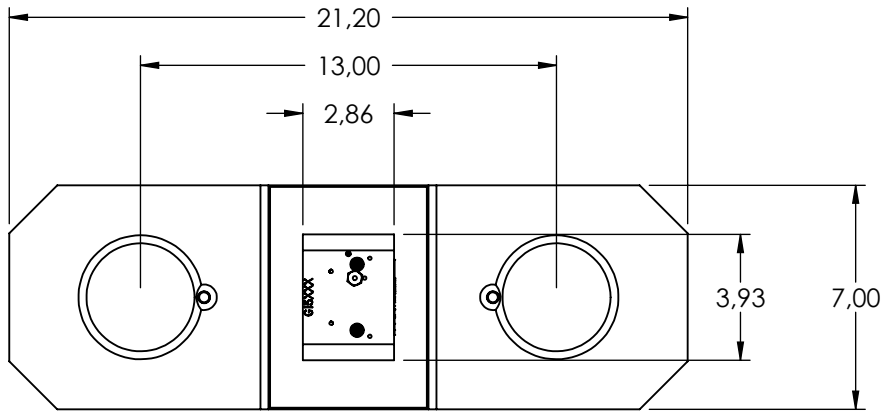
PROPRIETARY AND CONFIDENTIAL

THE INFORMATION CONTAINED IN THIS DRAWING IS THE SOLE PROPERTY OF LOAD SYSTEMS INTERNATIONAL. ANY REPRODUCTION IN PART OR AS A WHOLE WITHOUT THE WRITTEN PERMISSION OF LOAD SYSTEMS INTERNATIONAL IS PROHIBITED.



PART NO: GC100 DWG NO: DS-GC100 REV: 4

DESCRIPTION: **Wireless Load Cell**
45360 kg Working Load Limit



Battery	1 "D-Cell" Lithium, or alkaline
Estimated Battery Life*	Lithium: 2 years, Alkaline: 8 months
Operating Temperature	-31 to 185 °F
Radio Frequency Band	900 MHz standard - European Community's 868 MHz as an option
Radio Power	15 dBm
Material	Stainless Steel
Weight	94 lb

All dimensions are expressed in inches
The information in this document is subject to change without notice

*Battery life estimated for standard product only, using factory specified batteries correctly installed, operating for 32 hours per week. Individual results may vary with intensity of use, environmental conditions and other factors.

PROPRIETARY AND CONFIDENTIAL

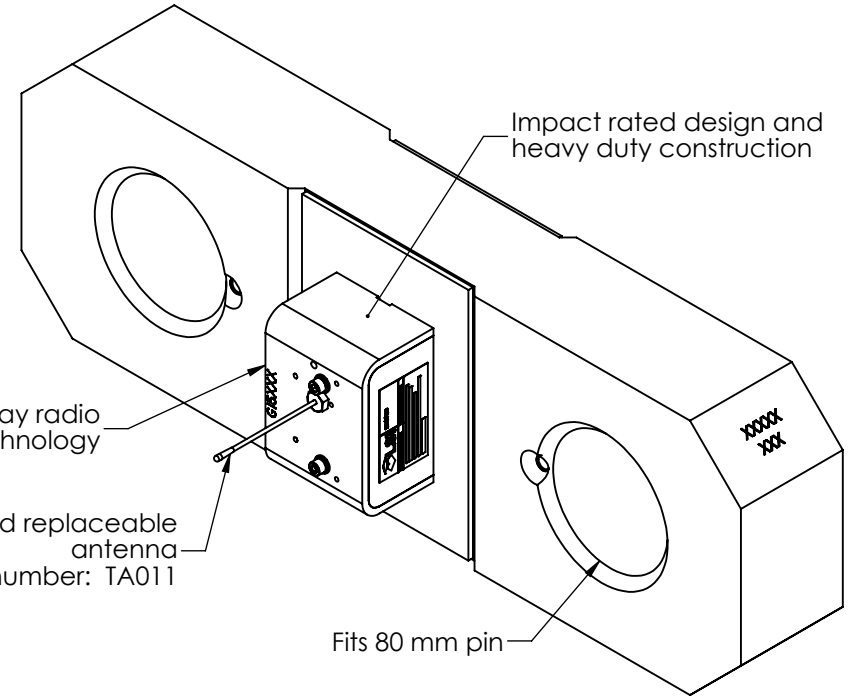
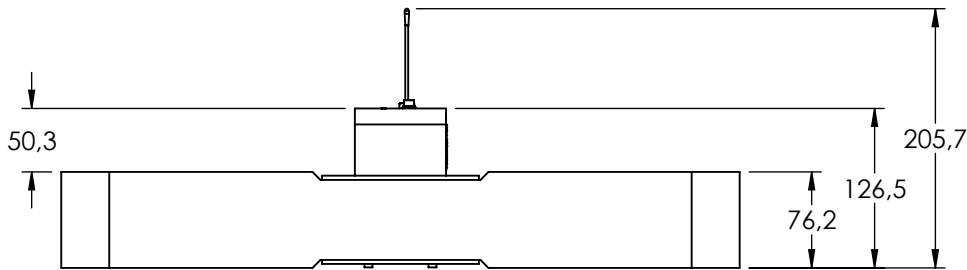
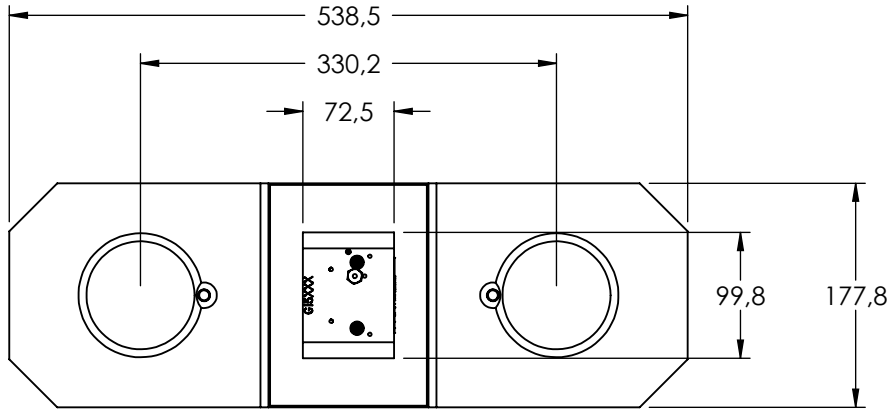
THE INFORMATION CONTAINED IN THIS DRAWING IS THE SOLE PROPERTY OF LOAD SYSTEMS INTERNATIONAL. ANY REPRODUCTION IN PART OR AS A WHOLE WITHOUT THE WRITTEN PERMISSION OF LOAD SYSTEMS INTERNATIONAL IS PROHIBITED.



www.loadsystems.com

PART NO: GC170 DWG NO: DS-GC170 REV: 4

DESCRIPTION: Wireless Load Cell
170,000 lb Working Load Limit



Battery	1 "D-Cell" Lithium, or alkaline
Estimated Battery Life*	Lithium: 2 years, Alkaline: 8 months
Operating Temperature	-35 to +85°C
Radio Frequency Band	900 MHz standard - European Community's 868 MHz as an option
Radio Power	15 dBm
Material	Stainless Steel
Weight	42.6 kg

All dimensions are expressed in mm
The information in this document is subject to change without notice

*Battery life estimated for standard product only, using factory specified batteries correctly installed, operating for 32 hours per week. Individual results may vary with intensity of use, environmental conditions and other factors.

PROPRIETARY AND CONFIDENTIAL

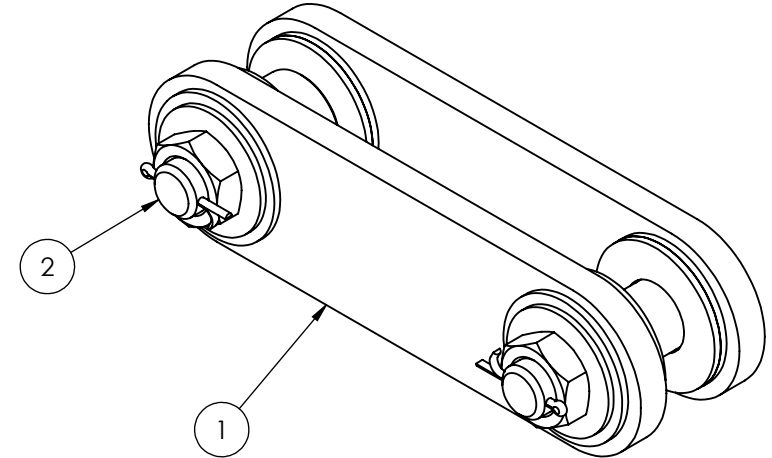
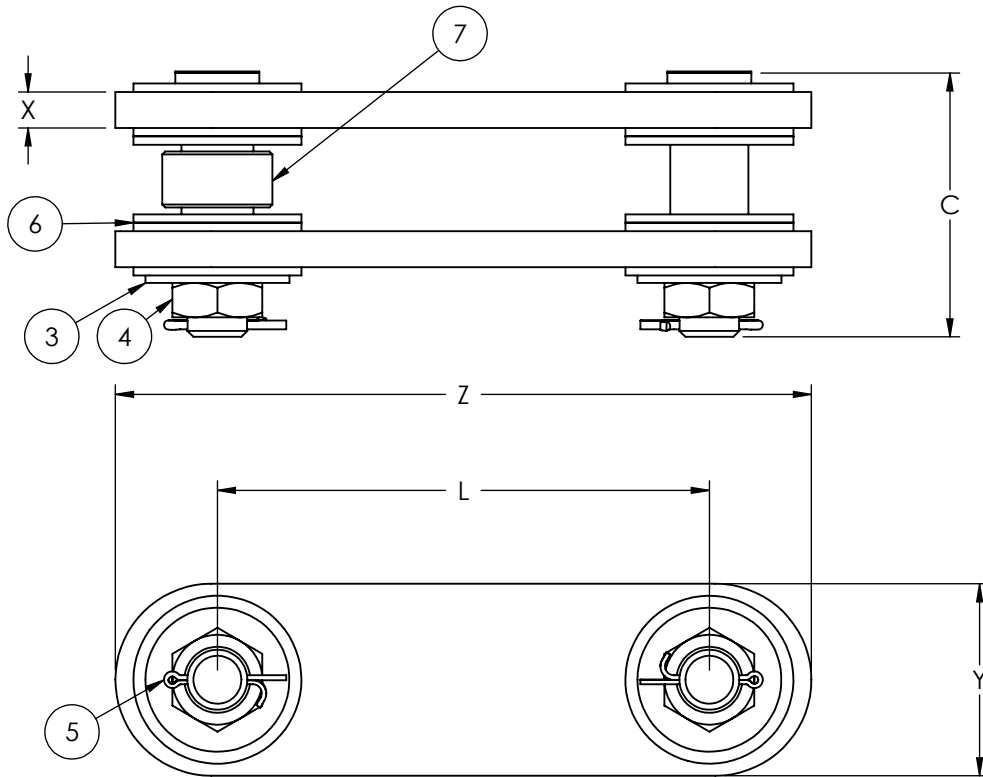
THE INFORMATION CONTAINED IN THIS DRAWING IS THE SOLE PROPERTY OF LOAD SYSTEMS INTERNATIONAL. ANY REPRODUCTION IN PART OR AS A WHOLE WITHOUT THE WRITTEN PERMISSION OF LOAD SYSTEMS INTERNATIONAL IS PROHIBITED.



PART NO: GC170 DWG NO: DS-GC170 REV: 4

DESCRIPTION: **Wireless Load Cell**
77000 kg Working Load Limit

Cap	Kit #	Plate p/n	Pin 1 p/n	PIN # 1	Nut Washer	Nut	Cotter Pin	Washer	Qty	Bushing*	Pin 2 p/n	PIN # 2	Nut Washer	Nut	Cotter Pin	Washer	Qty	Bushing	O/all Width	C/C	Thickness	Width	O/all Length
		ITM 1	ITM 2		ITM 3	ITM 4	ITM 5	ITM 6		ITM 7									C	L	X	Y	Z
12k	LC612-01	PC612-01	PC501	1	QW912	QV930	QP003S	QW901	6	PC401*	PC502	1,25	QW912	QV930	QP003S	QW902	6		4,23	3,75	0,5	3	6,75
18k	LC618-01	PC618-01	PC502	1,25	QW912	QV930	QP003S	QW902	4	PC118*	PC503	1,375	QW912	QV930	QP003S	QW906	4		4,23	4,25	0,625	3	7,35
35k	LC635-01	PC635-01	PC502	1,25	QW912	QV930	QP003S	QW902	2	PC429*	PC502	1,25	QW912	QV930	QP003S	QW902	2	PC423*	4,23	4,25	0,75	4	8,25
35k	LC635-02	PC635-02	PC506	1,625	QW902	QV950	QP003S	QW903	6		PC504	2	QW907	QV951	QP004S	QW904	6	PC428*	5,84	7,25	0,75	4	11,5
35k	LC635-03	PC635-03	PC506	1,625	QW902	QV950	QP003S	QW903	6		PC505	1,5	QW902	QV950	QP003S	QW903	6	PC424*	5,53	10,25	0,75	4	14,5
35k	LC635-04	PC635-04	PC506	1,625	QW902	QV950	QP003S	QW903	6		PC505	1,5	QW902	QV950	QP003S	QW903	6	PC424*	5,53	36	0,75	4	40,25
35k	LC635-09	PC635-09	PC522	2,25	QW903	QV951	QP004S	QW904B	4		PC506	1,625	QW903	QV950	QP003S	QW903	4		5,84	6	0,75	4	10,1
60k	LC660-01	PC660-01	PC506	1,625	QW902	QV950	QP003S	QW903	2	PC108*	PC506	1,625	QW902	QV950	QP003S	QW903	2	PC108*	5,53	5,25	1	5	10,25
60k	LC660-02	PC660-02	PC508	2,25	QW903	QV951	QP004S	QW904B	4	PC114*	PC507	2	QW903	QV951	QP004S	QW904	4	PC115*	6,34	5,25	1	5	10,5
60k	LC660-03	PC660-03	PC508	2,25	QW903	QV951	QP004S	QW904B	4	PC114*	PC507	2	QW903	QV951	QP004S	QW904	4	PC115*	6,34	11,25	1	5	16,5
60k	LC660-04	PC660-04	PC508	2,25	QW903	QV951	QP004S	QW904B	4	PC114*	PC507	2	QW903	QV951	QP004S	QW904	4	PC115*	6,34	24	1	5	29,25
60k	LC660-05	PC660-05	PC509	2,5	QW904	QV952	QP004S	QW904C	10		PC509	2,5	QW904	QV952	QP004S	QW904C	10		8,09	7,25	1	5	12,5
60k	LC660-06	PC660-06	PC509	2,5	QW904	QV952	QP004S	QW904C	10		PC509	2,5	QW904	QV952	QP004S	QW904C	10		8,09	11,25	1	5	16,5



* Bushings not included. Required bushings included with load cell when load cell and adapter plate kit are ordered together.

PROPRIETARY AND CONFIDENTIAL

THE INFORMATION CONTAINED IN THIS DRAWING IS THE SOLE PROPERTY OF LOAD SYSTEMS INTERNATIONAL. ANY REPRODUCTION IN PART OR AS A WHOLE WITHOUT THE WRITTEN PERMISSION OF LOAD SYSTEMS INTERNATIONAL IS PROHIBITED.

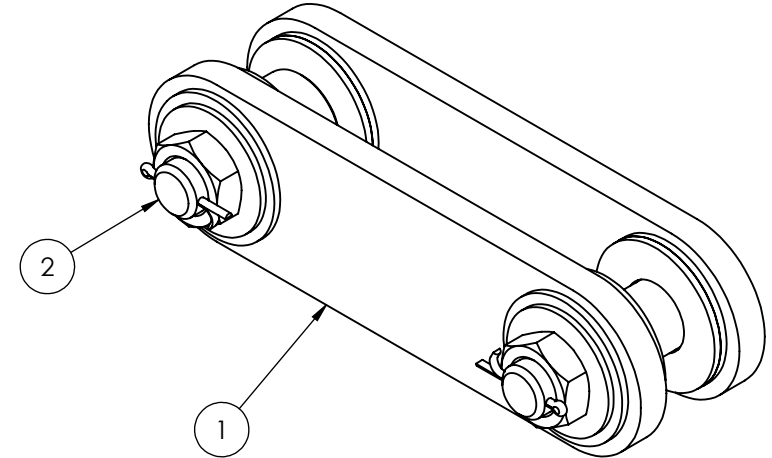
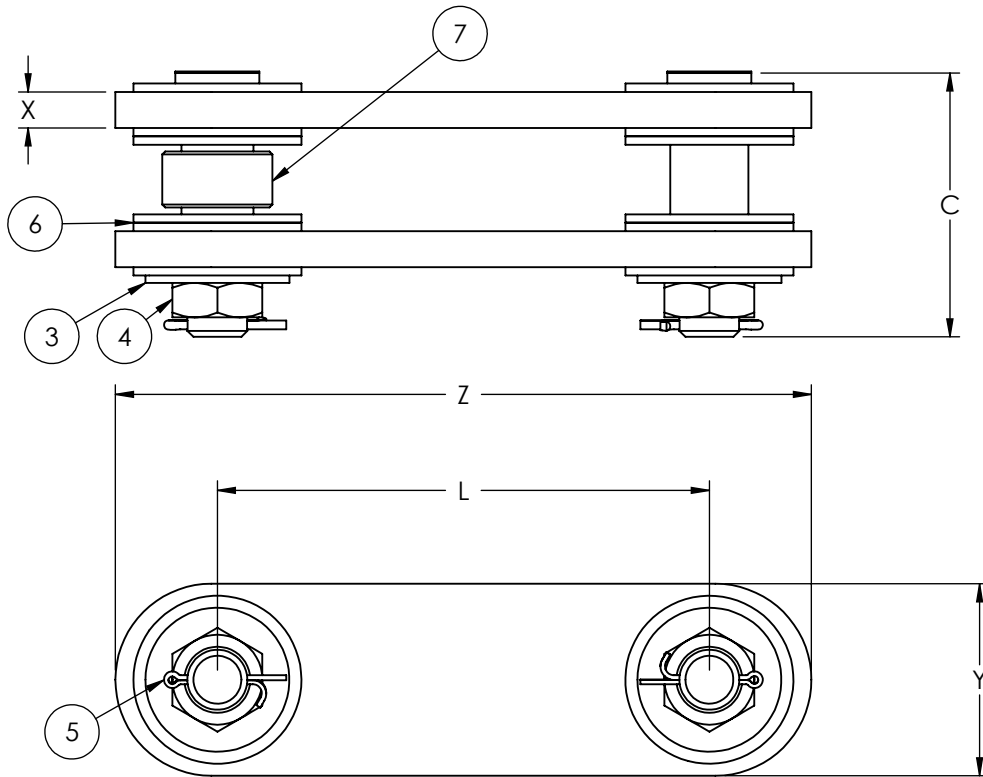


PART NO: LC6XX-XX DWG NO: DS-LC6XX-XX REV: 6

DESCRIPTION: Adapter Plate Kits

All dimensions are in inches
The information in this document is subject to change without notice

Cap	Kit #	Plate p/n	Pin 1 p/n	PIN # 1	Nut Washer	Nut	Cotter Pin	Washer	Qty	Bushing*	Pin 2 p/n	PIN # 2	Nut Washer	Nut	Cotter Pin	Washer	Qty	Bushing*	O/all Width	C/C	Thickness	Width	O/all Length
		ITM 1	ITM 2		ITM 3	ITM 4	ITM 5	ITM 6		ITM 7									C	L	X	Y	Z
12k	LC612-01	PC612-01	PC501	25,4	QW912	QV930	QP003S	QW901	6	PC401*	PC502	31,8	QW912	QV930	QP003S	QW902	6		107,4	95,3	12,7	76,2	171,5
18k	LC618-01	PC618-01	PC502	31,8	QW912	QV930	QP003S	QW902	4	PC118*	PC503	34,9	QW912	QV930	QP003S	QW906	4		107,4	108,0	15,9	76,2	186,7
35k	LC635-01	PC635-01	PC502	31,8	QW912	QV930	QP003S	QW902	2	PC429*	PC502	31,8	QW912	QV930	QP003S	QW902	2	PC423*	107,4	108,0	19,1	101,6	209,6
35k	LC635-02	PC635-02	PC506	41,3	QW902	QV950	QP003S	QW903	6		PC504	50,8	QW907	QV951	QP004S	QW904	6	PC428*	148,3	184,2	19,1	101,6	292,1
35k	LC635-03	PC635-03	PC506	41,3	QW902	QV950	QP003S	QW903	6		PC505	38,1	QW902	QV950	QP003S	QW903	6	PC424*	140,5	260,4	19,1	101,6	368,3
35k	LC635-04	PC635-04	PC506	41,3	QW902	QV950	QP003S	QW903	6		PC505	38,1	QW902	QV950	QP003S	QW903	6	PC424*	140,5	914,4	19,1	101,6	1022,4
35k	LC635-09	PC635-09	PC522	57,2	QW903	QV951	QP004S	QW904B	4		PC506	41,3	QW903	QV950	QP003S	QW903	4		148,3	152,4	19,1	101,6	256,5
60k	LC660-01	PC660-01	PC506	41,3	QW902	QV950	QP003S	QW903	2	PC108*	PC506	41,3	QW902	QV950	QP003S	QW903	2	PC108*	140,5	133,4	25,4	127,0	260,4
60k	LC660-02	PC660-02	PC508	57,2	QW903	QV951	QP004S	QW904B	4	PC114*	PC507	50,8	QW903	QV951	QP004S	QW904	4	PC115*	161,0	133,4	25,4	127,0	266,7
60k	LC660-03	PC660-03	PC508	57,2	QW903	QV951	QP004S	QW904B	4	PC114*	PC507	50,8	QW903	QV951	QP004S	QW904	4	PC115*	161,0	285,8	25,4	127,0	419,1
60k	LC660-04	PC660-04	PC508	57,2	QW903	QV951	QP004S	QW904B	4	PC114*	PC507	50,8	QW903	QV951	QP004S	QW904	4	PC115*	161,0	609,6	25,4	127,0	743,0
60k	LC660-05	PC660-05	PC509	63,5	QW904	QV952	QP004S	QW904C	10		PC509	63,5	QW904	QV952	QP004S	QW904C	10		205,5	184,2	25,4	127,0	317,5
60k	LC660-06	PC660-06	PC509	63,5	QW904	QV952	QP004S	QW904C	10		PC509	63,5	QW904	QV952	QP004S	QW904C	10		205,5	285,8	25,4	127,0	419,1



* Bushings not included. Required bushings included with load cell when load cell and adapter plate kit are ordered together.

All dimensions are in mm
The information in this document is subject to change without notice

PROPRIETARY AND CONFIDENTIAL

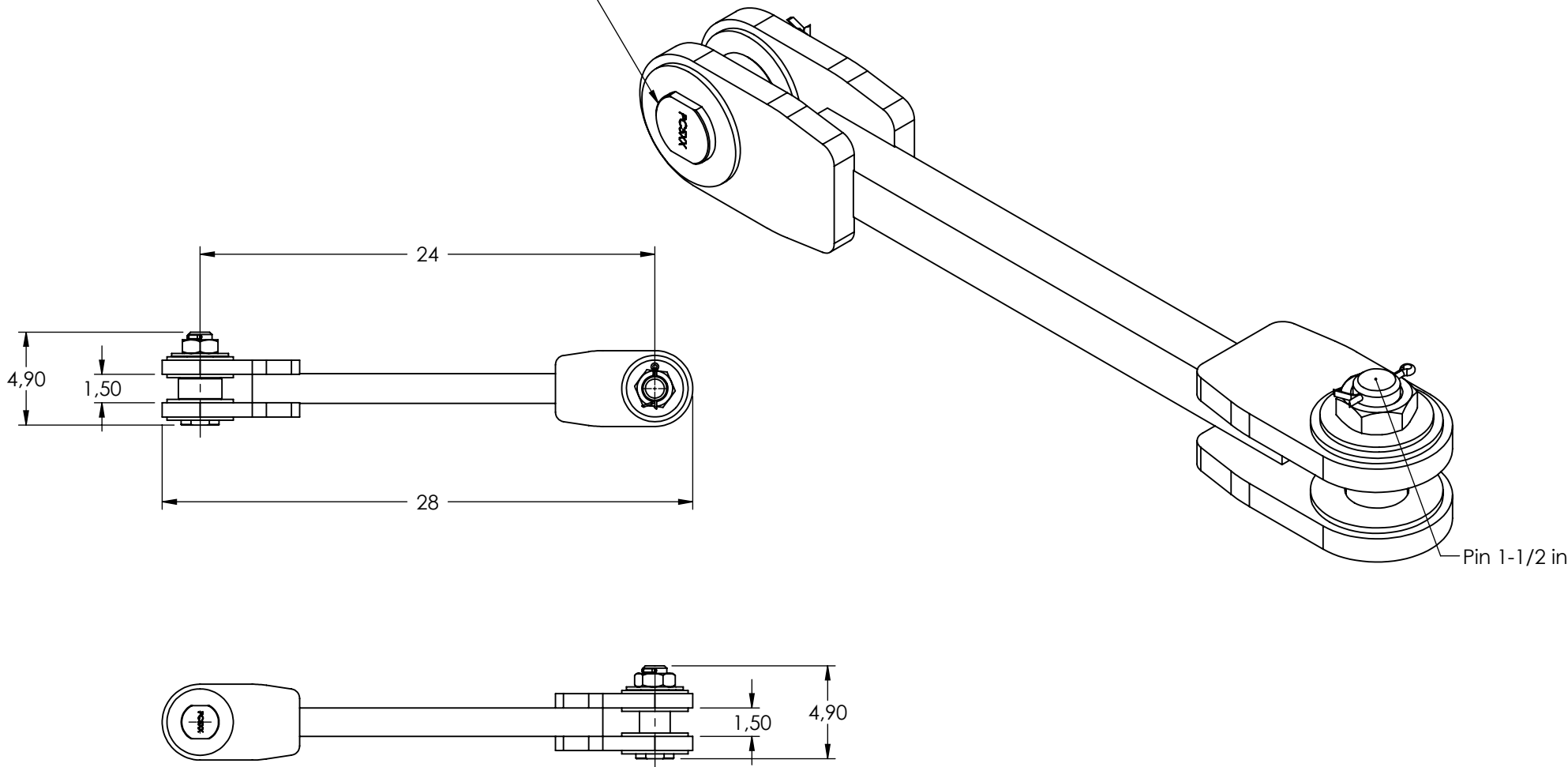
THE INFORMATION CONTAINED IN THIS DRAWING IS THE SOLE PROPERTY OF LOAD SYSTEMS INTERNATIONAL. ANY REPRODUCTION IN PART OR AS A WHOLE WITHOUT THE WRITTEN PERMISSION OF LOAD SYSTEMS INTERNATIONAL IS PROHIBITED.



PART NO: LC6XX-XX DWG NO: DS-LC6XX-XX REV: 6

DESCRIPTION:
Adapter Plate Kits

Pin 1-5/8 in.



Pin 1-1/2 in.

Material	Zinc Plated Steel		
Weight	46 lb		

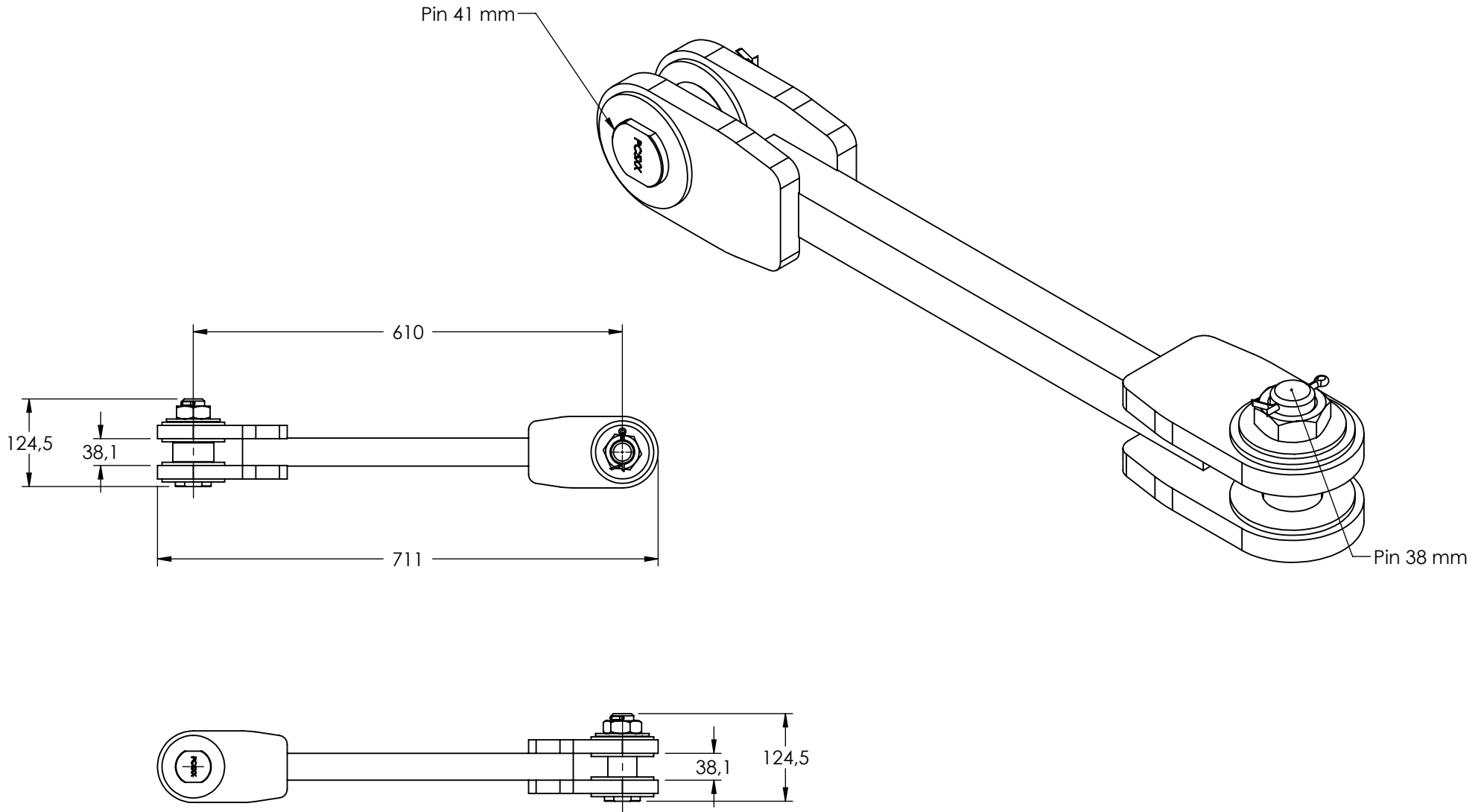
PROPRIETARY AND CONFIDENTIAL
 THE INFORMATION CONTAINED IN THIS DRAWING IS THE SOLE PROPERTY OF LOAD SYSTEMS INTERNATIONAL. ANY REPRODUCTION IN PART OR AS A WHOLE WITHOUT THE WRITTEN PERMISSION OF LOAD SYSTEMS INTERNATIONAL IS PROHIBITED.



PART NO: LC635-51 | DWG NO: DS-LC635-51 | REV: 3

DESCRIPTION:
35 000 lb 90° Adapter Kit
 (24 in. cc, Pins: 1-1/2 in. & 1-5/8 in)

All dimensions are in inches
 The information in this document is subject to change without notice



Material	Zinc Plated Steel
Weight	21 kg

PROPRIETARY AND CONFIDENTIAL

THE INFORMATION CONTAINED IN THIS DRAWING IS THE SOLE PROPERTY OF LOAD SYSTEMS INTERNATIONAL. ANY REPRODUCTION IN PART OR AS A WHOLE WITHOUT THE WRITTEN PERMISSION OF LOAD SYSTEMS INTERNATIONAL IS PROHIBITED.

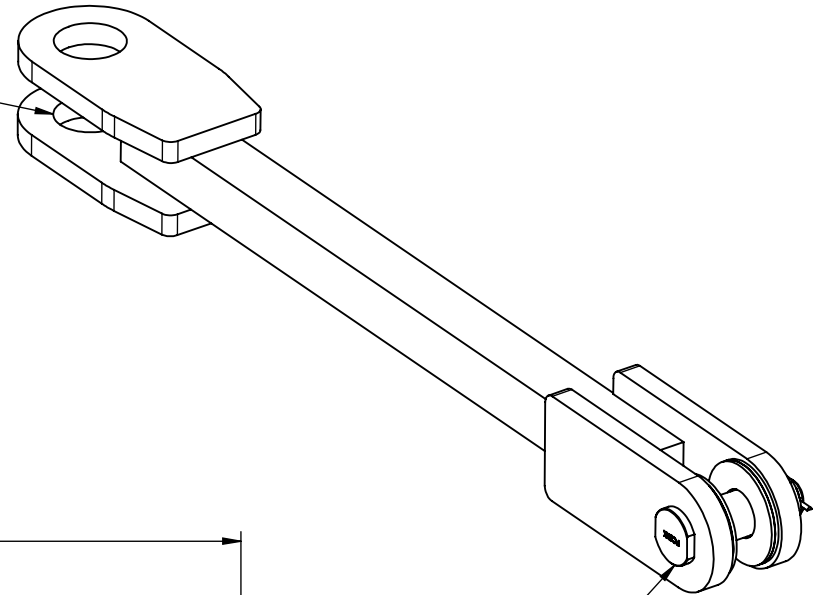


PART NO:	LC635-51	DWG NO:	DS-LC635-51	REV:	3
----------	----------	---------	-------------	------	---

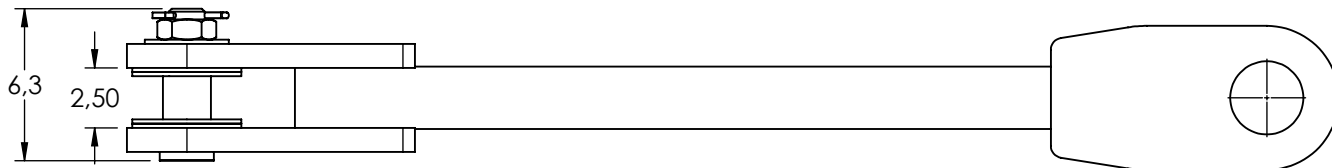
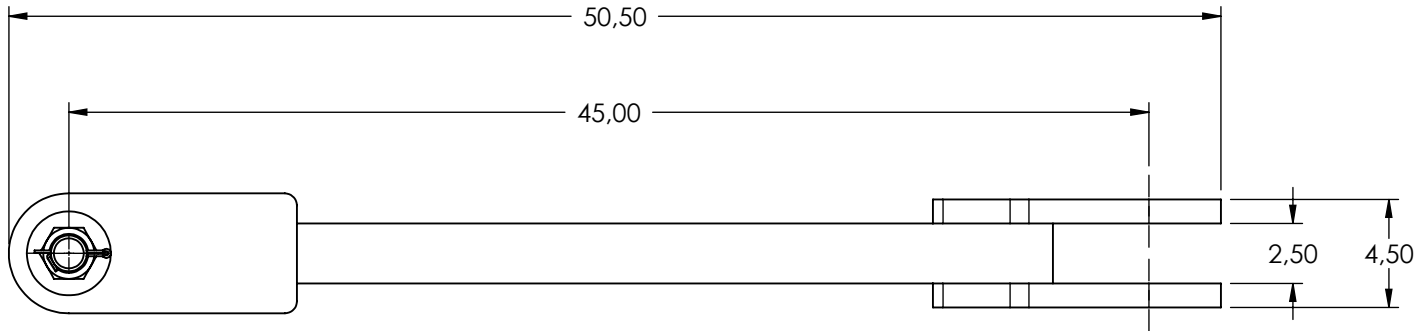
DESCRIPTION:
**15 900 kg 90° Adapter Kit
 (61 cm cc, Pins: 38 mm & 41 mm)**

All dimensions are in mm
 The information in this document is subject to change without notice

Fits 3 in. pin
Not Included



2 in. Pin



Material	Steel, painted gray
Weight	163 lb

PROPRIETARY AND CONFIDENTIAL

THE INFORMATION CONTAINED IN THIS DRAWING IS THE SOLE PROPERTY OF LOAD SYSTEMS INTERNATIONAL. ANY REPRODUCTION IN PART OR AS A WHOLE WITHOUT THE WRITTEN PERMISSION OF LOAD SYSTEMS INTERNATIONAL IS PROHIBITED.

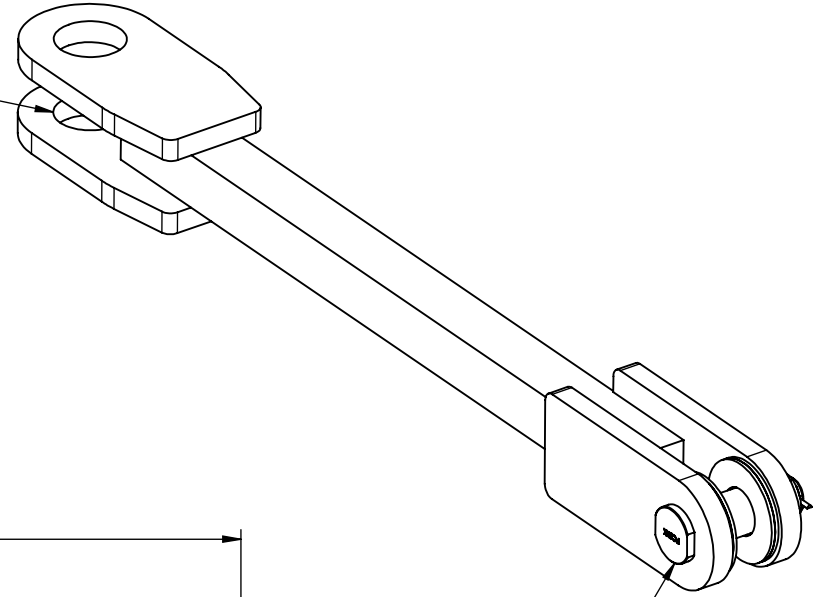


PART NO:	LC660-51	DWG NO:	DS-LC660-51	REV:	2
----------	----------	---------	-------------	------	---

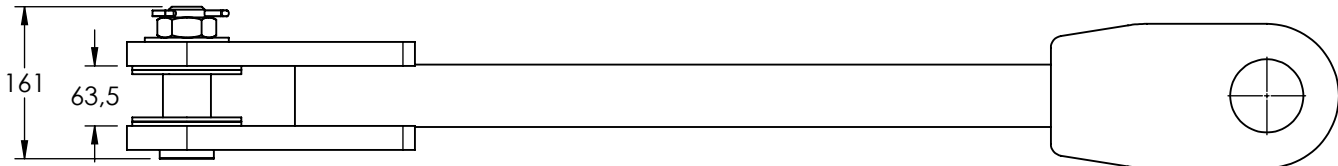
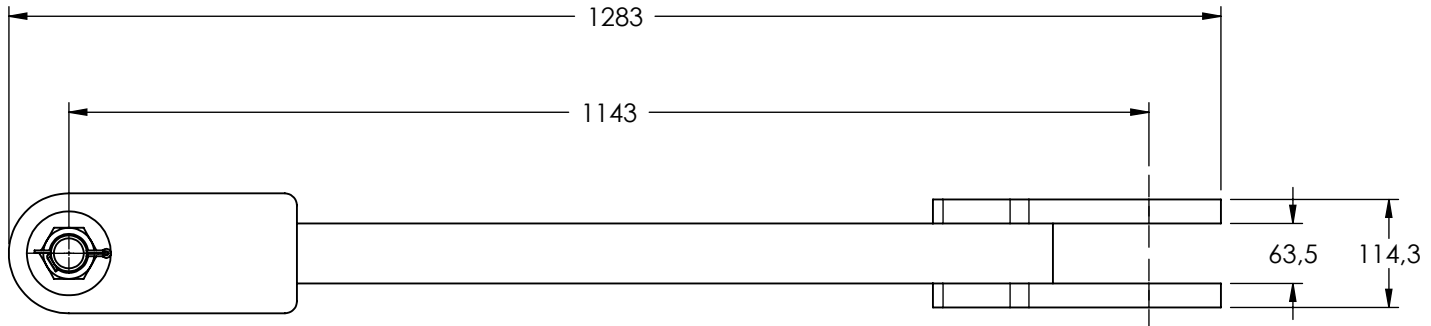
DESCRIPTION:
60,000 lb 90° Adapter Kit
(45 in. cc, 2 in. Pin & 3 in. hole)

All dimensions are in inches
The information in this document is subject to change without notice

Fits 76 mm pin
Not Included



51 mm Pin



Material	Steel, painted gray
Weight	74 kg

PROPRIETARY AND CONFIDENTIAL
THE INFORMATION CONTAINED IN THIS DRAWING IS THE SOLE PROPERTY OF LOAD SYSTEMS INTERNATIONAL. ANY REPRODUCTION IN PART OR AS A WHOLE WITHOUT THE WRITTEN PERMISSION OF LOAD SYSTEMS INTERNATIONAL IS PROHIBITED.



PART NO:	LC660-51	DWG NO:	DS-LC660-51	REV:	2
----------	----------	---------	-------------	------	---

DESCRIPTION:
27270 kg 90° Adapter Kit
(17.7 cm cc, 51 mm Pin & 76 mm hole)

All dimensions are in mm
The information in this document is subject to change without notice