



PAT PRS 145 Load Moment Indicator

Features

- Displays actual/allowable load, load radius, boom angle and length
- Set-up through operator's console
- Integrated lightbar provides a quick reference of utilization
- Meets SAE and ANSI B-30.5 standards



Improves efficiency and
productivity of mobile
crane operations





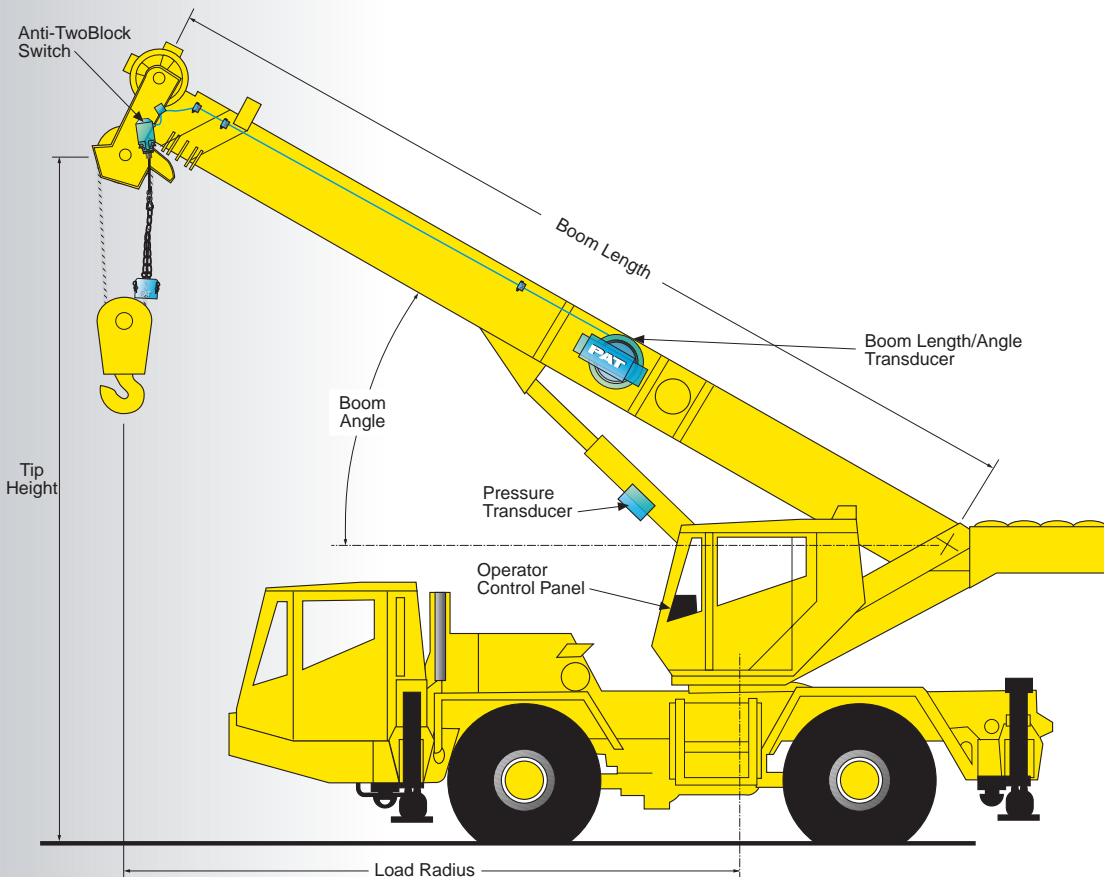
LOAD MOMENT

Precise information where and when it's needed

The PRS 145 puts a full range of precise information right in the cab. Designed for use on mobile cranes, the PRS 145 is installed and calibrated to the load chart of each crane—including specific load and geometric limits on boom length, angle, and operating radius. This leading edge technology gives the operator the information necessary to fully utilize the crane's working capacity, while keeping within the safe working limits of the crane.

The PRS 145 is designed to be set up quickly and easily in the field. This is done through the user-friendly, self-guided, interactive setup procedure, which is performed entirely through the operator console.

As the global leader in crane information systems, PAT gives you an unmatched combination of product quality and field support. PAT service, parts and training ensure that the PRS 145 meets your demands for performance and reliability with fast on-site installation and accurate calibration to your specific needs.



The PRS 145 offers a full-range of outstanding features, including:

Quick, Easy Calibration Exclusive AccuCal™ calibration software allows calibration through the operator's console by your local dealer. No additional device or personnel is needed. The program utilizes a pass code that prohibits access to unauthorized personnel.

Measures True Load Moment By measuring the true load moment, the PRS 145 senses boom dynamics, load swingout, wind loading, shock load and the effects of boom deflection. Pressure transducers in the lift cylinders of telescopic boom cranes are used to measure load moment.

Digital LCD Display Large characters and a super-twisted LCD—backlit for night operation—gives operators a clear and easy view from all angles.

Integrated Light bar The integration lightbar provides a quick reference of crane utilization

Anti-Two-Block A special hoist limit switch sounds an alarm and flashes a visual warning of an impending two-block condition.

Function Control Lever Lockout When the LMI System senses an overload or an impending two-block condition, the PRS 145 provides a relay output which can be used to engage an optional lever lockout system to override hoist "up" telescope and "out" and boom "down" functions.

Self-Diagnostics Continuously monitors system and sensors. Error codes are displayed to help identify problems and minimize downtime.

A Modular System with Open-Ended Architecture

Your PRS 145 is reliable—
and designed to expand with your needs.

Like all PAT products, the PRS 145 is manufactured to the highest standards. The modular, open-ended design allows you to easily add to the system as your needs change.



PAT PRS 145 Technical Data

Power supply	+12Vdc (optional 24Vdc) \pm 20%
Max consumption	<500M A
Analog inputs	8
Digital inputs	5
Digital outputs	4
Pressure transducers	250 or 400 bar
Angle detector	90° potentiometric
Extension detector	34 m max. potentiometric
Operating temperatures	-25°C to +70°C
Protection	IP 65

PAT Means Highest Quality and Finest Service

Like all PAT products, the PRS 145 is designed and built to operate under the most rugged conditions. Parts are standard, modular and interchangeable—and they're readily available from nearby PAT sales and service centers. PAT has more service representatives and more people have been trained on PAT than on any other system. The PRS 145 conforms to SAEJ159 and ANSI B 30.5 standards and it meets the requirements of the Corps of Engineers, New York City and Cal-OSHA.

Product Support

PAT offers global product support. Our crane information and monitoring systems, scales for road vehicles and on-board weighing systems for materials handling are designed and built to strict technical and performance standards. PAT puts years of engineering experience to work in order to solve the application problems of every customer.

PAT offers a wide range of advanced computerized systems for improving the operating efficiency of cranes, wheel loaders, fork lifts, haul trucks and other equipment.

Other products available from PAT:

EI 65

The EI 65 system displays boom length, boom angle, working radius and load-on-hook to help operators make lifts within crane operating limits. Features operator settable limits on all variables.



Telemetry Indicator System

Wireless Load/Anti-Two-Block Indicator monitors any combination of load and A2B. Requires no hard wires or cable reels. Provides accurate load measurement. Warns of impending two-block condition.



Compu-Crane

Graphically perform every lift before you start the job. Compu-Crane allows you to accurately plan lifts and select cranes for every job.



MC 400

Dynamic Weighing and Totalization System is designed to increase the efficiency and productivity of loader operations.



www.patamerica.com

PAT America, Inc.

1665 Orchard Drive, Chambersburg, PA 17201

717-263-7655 • FAX 717-263-7845

e-mail: info@patamerica.com

